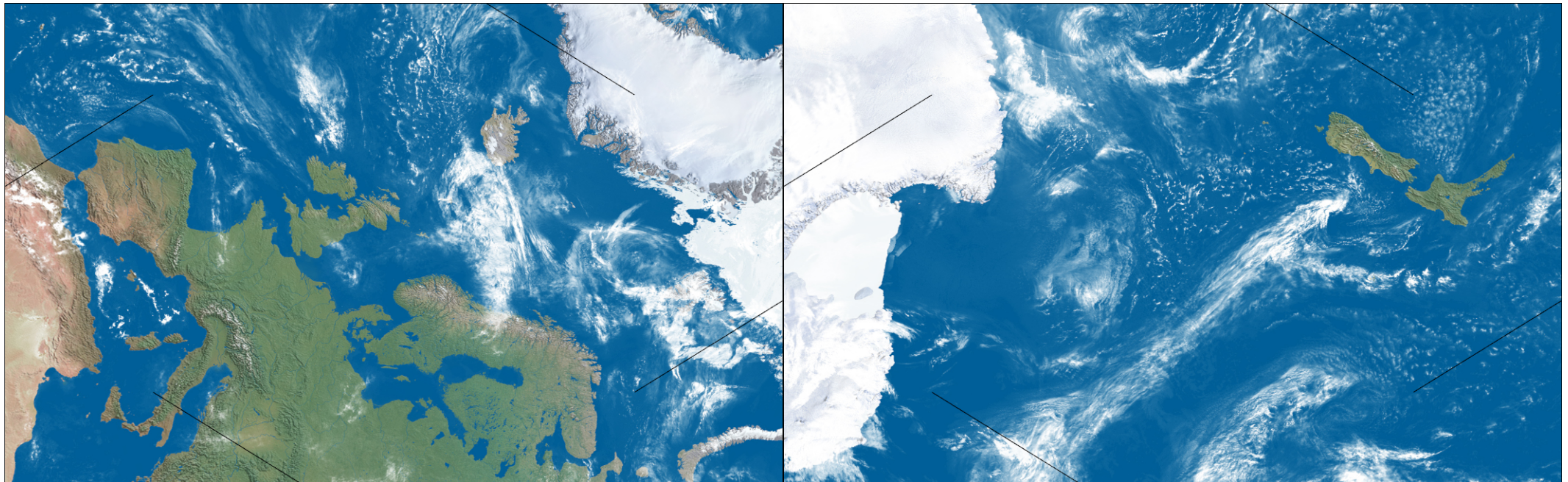
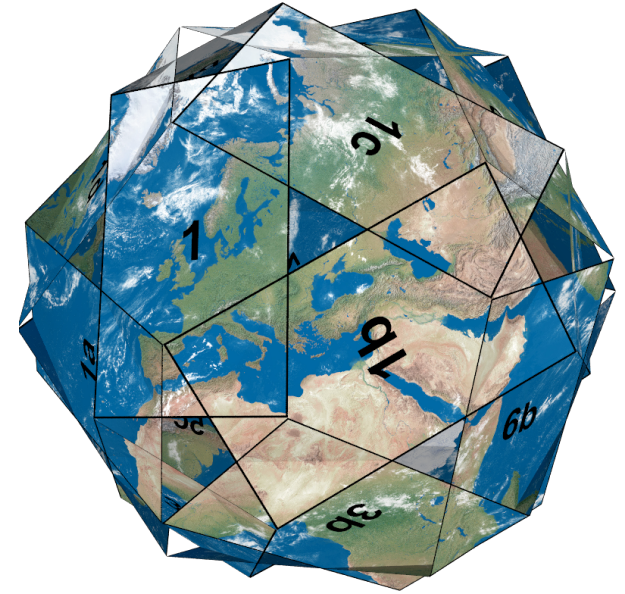
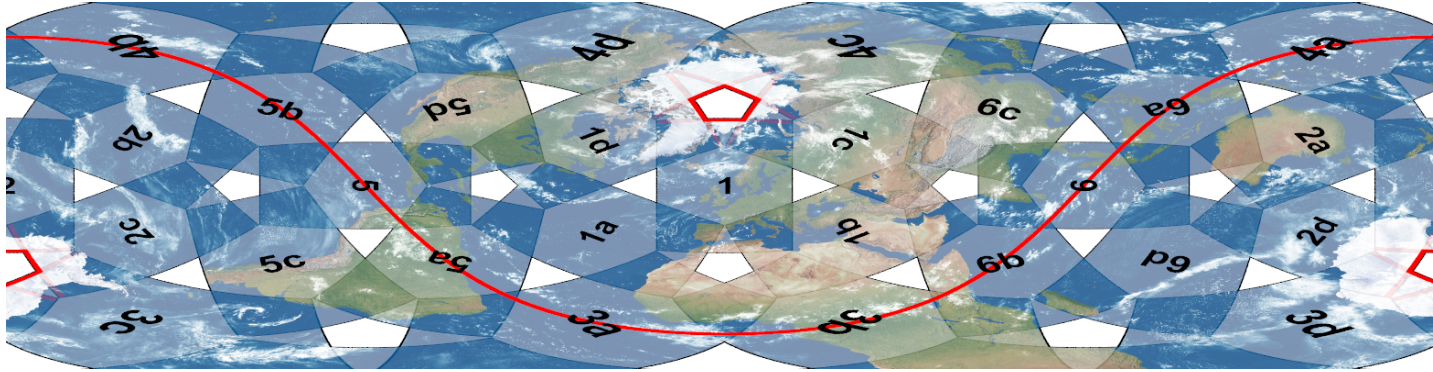


## Earth

Cut out the rectangles, cut in the lines and mount the cards as shown here.  
The red line is the equator, the red pentagons are the poles.

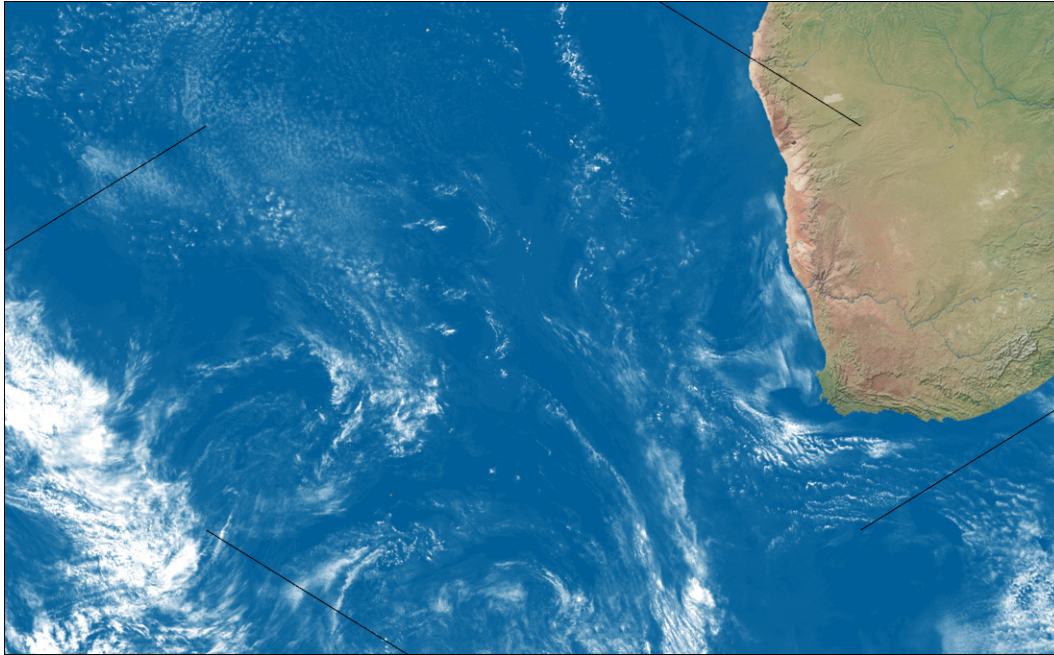


Earth 1

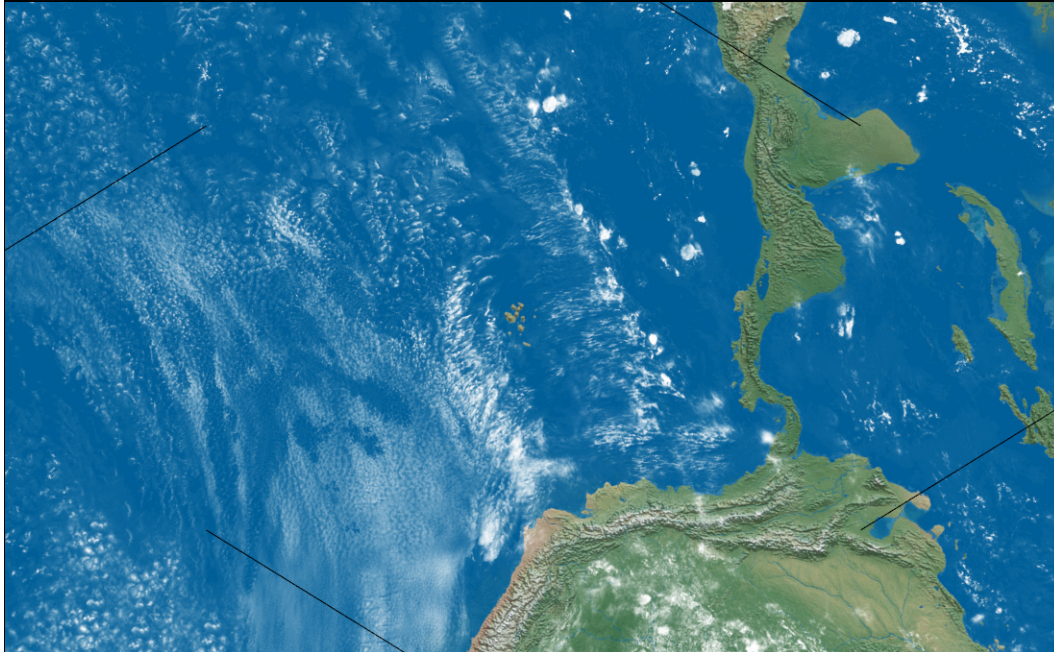
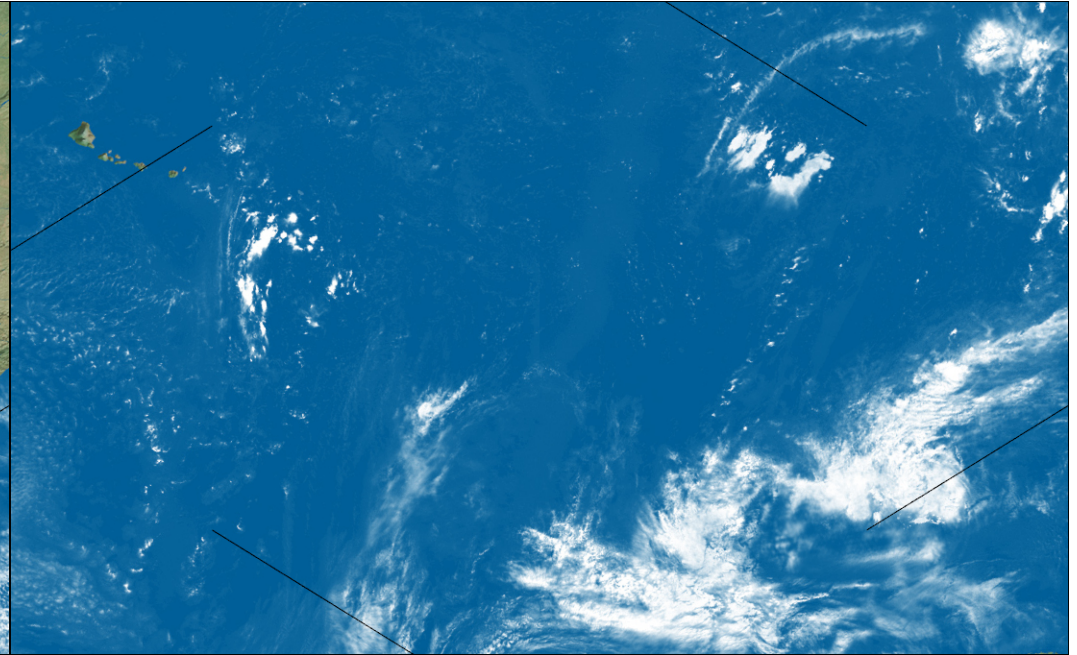
Earth 2



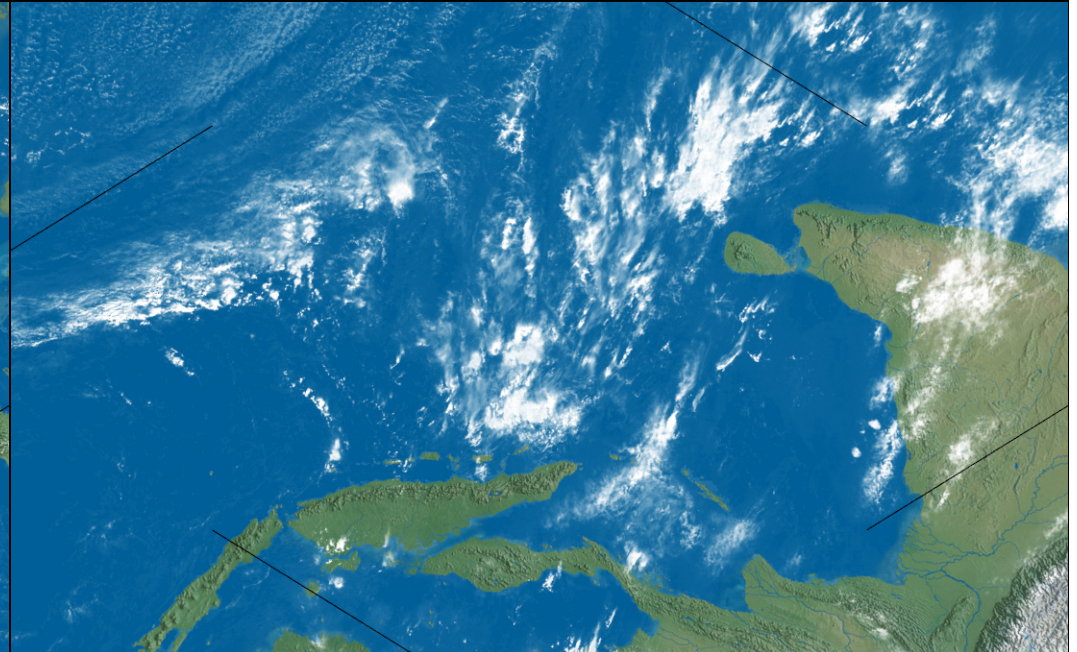
**Earth 3**



**Earth 4**



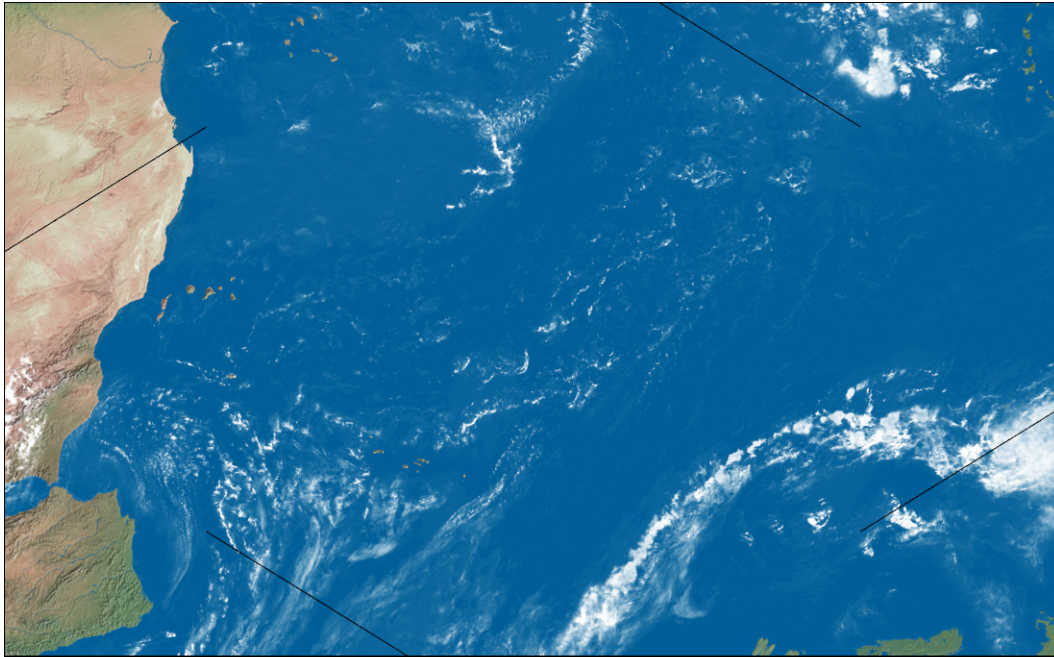
**Earth 5**



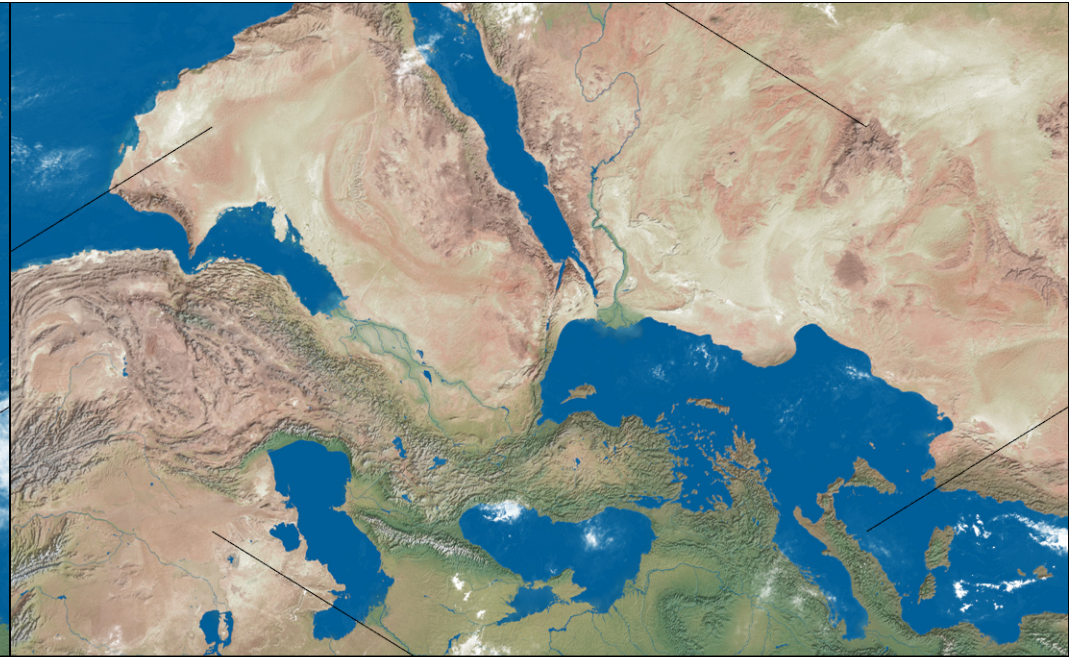
**Earth 6**



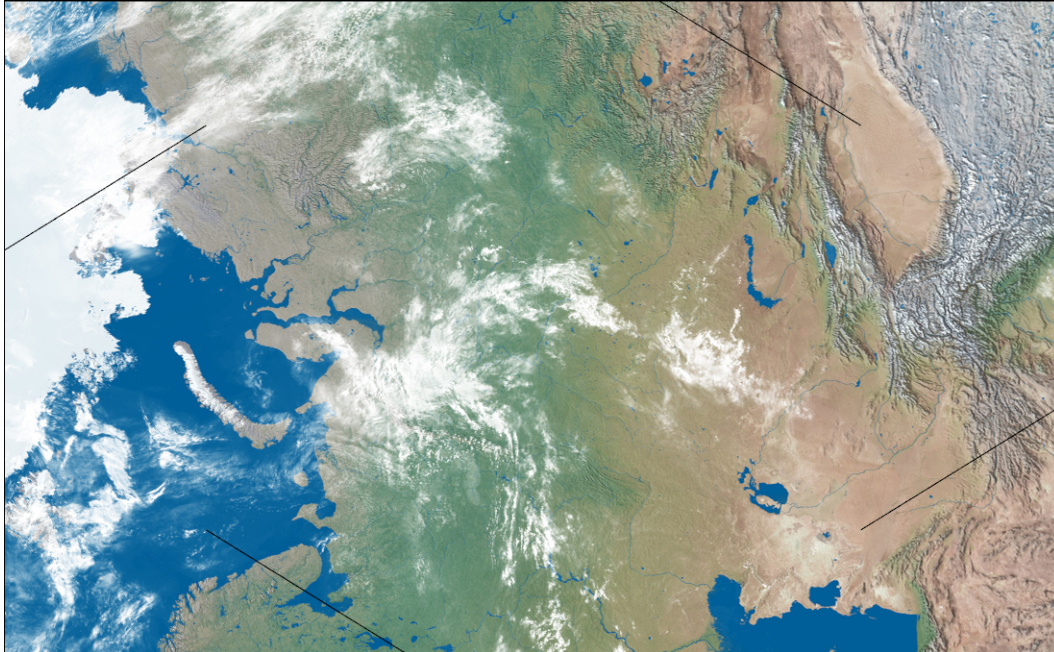
**Earth 1a**



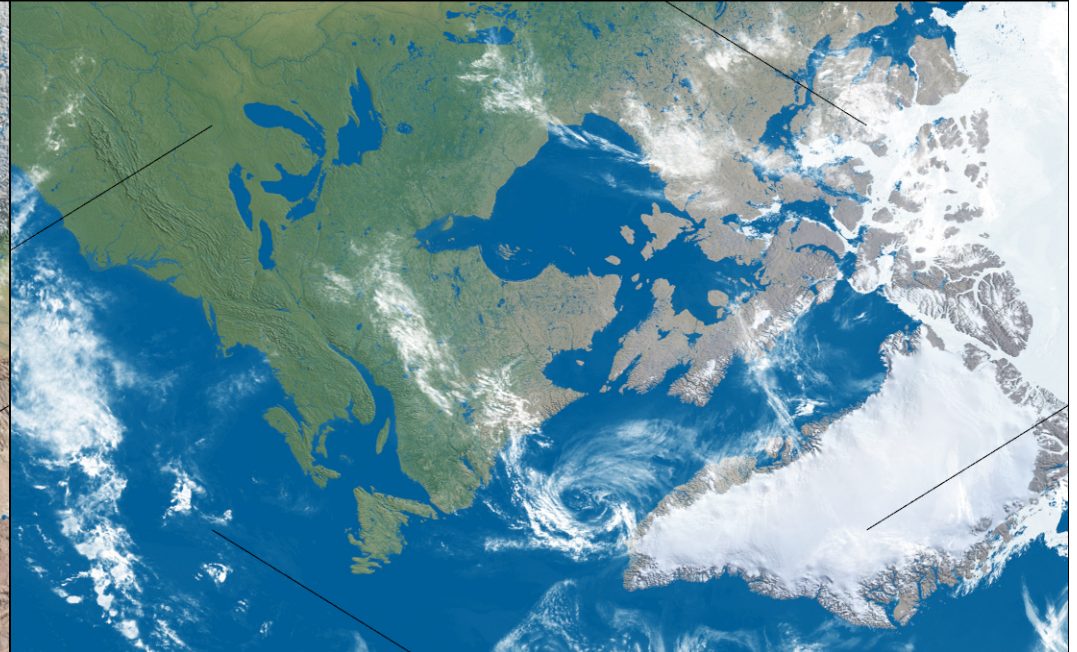
**Earth 1b**



**Earth 1c**

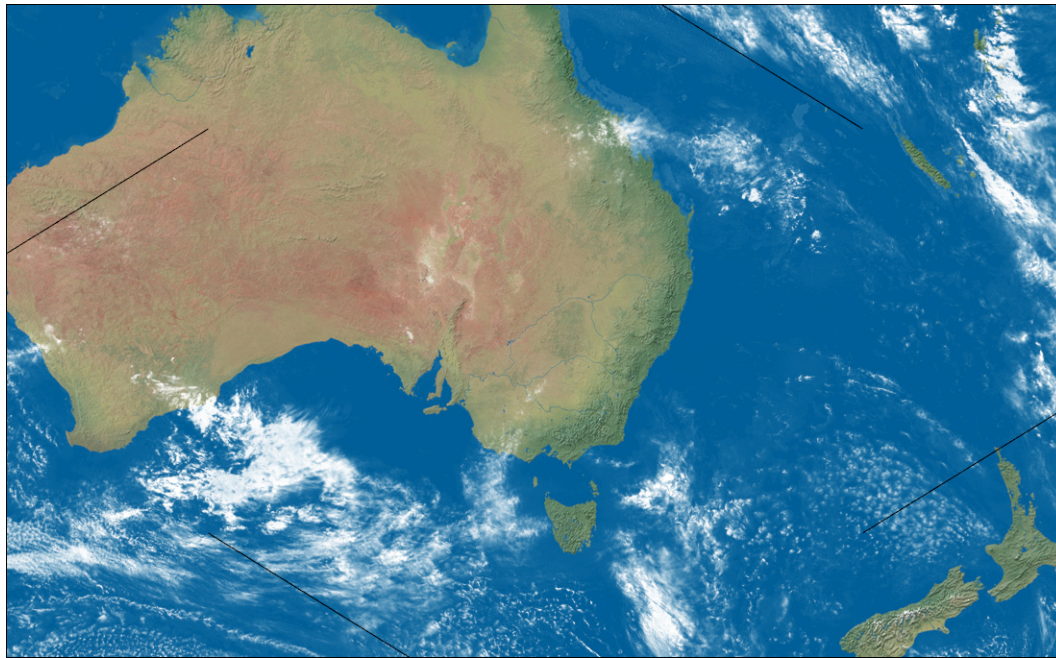


**Earth 1d**

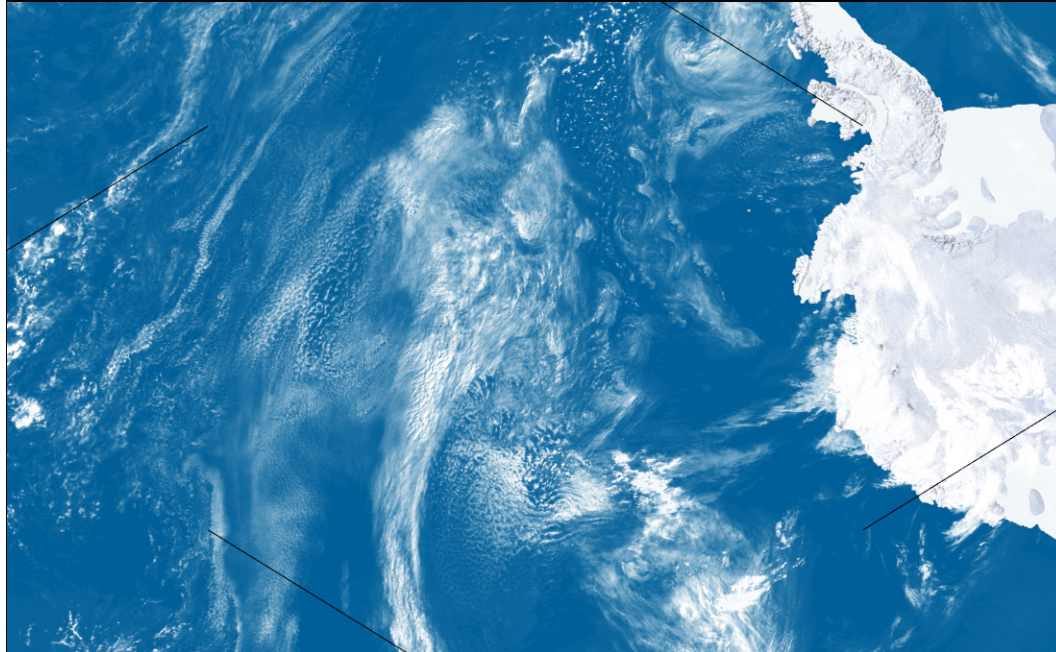
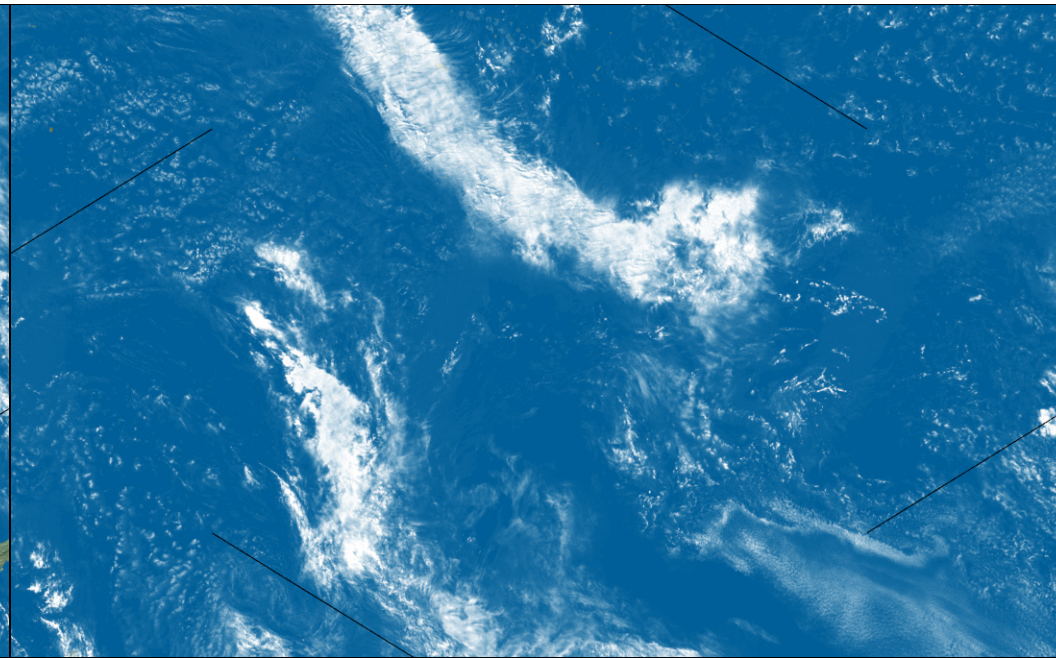




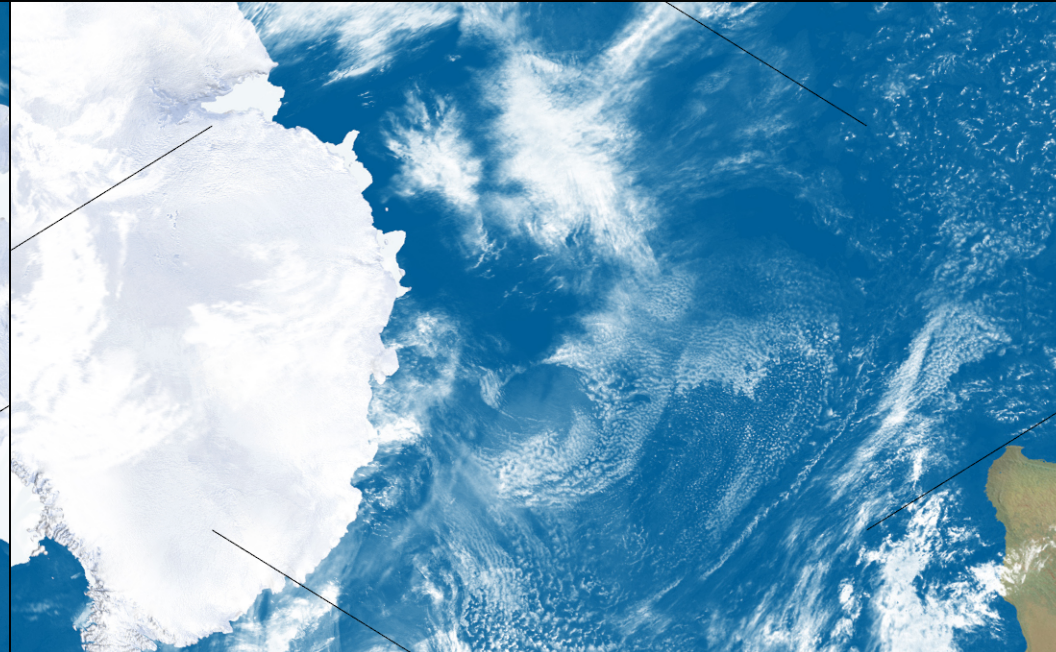
**Earth 2a**



**Earth 2b**



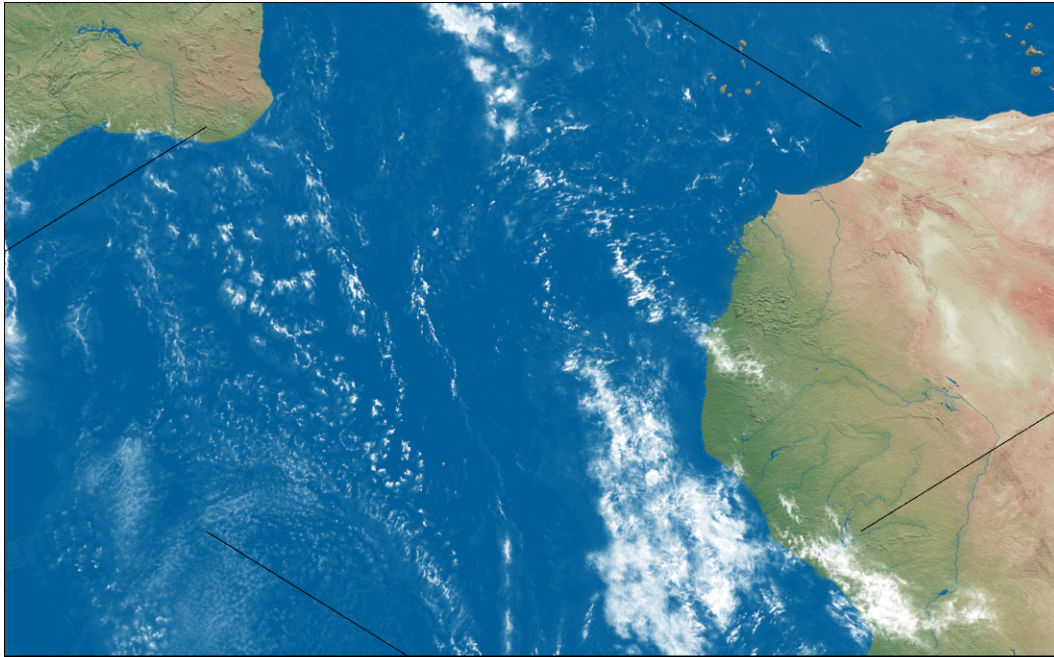
**Earth 2c**



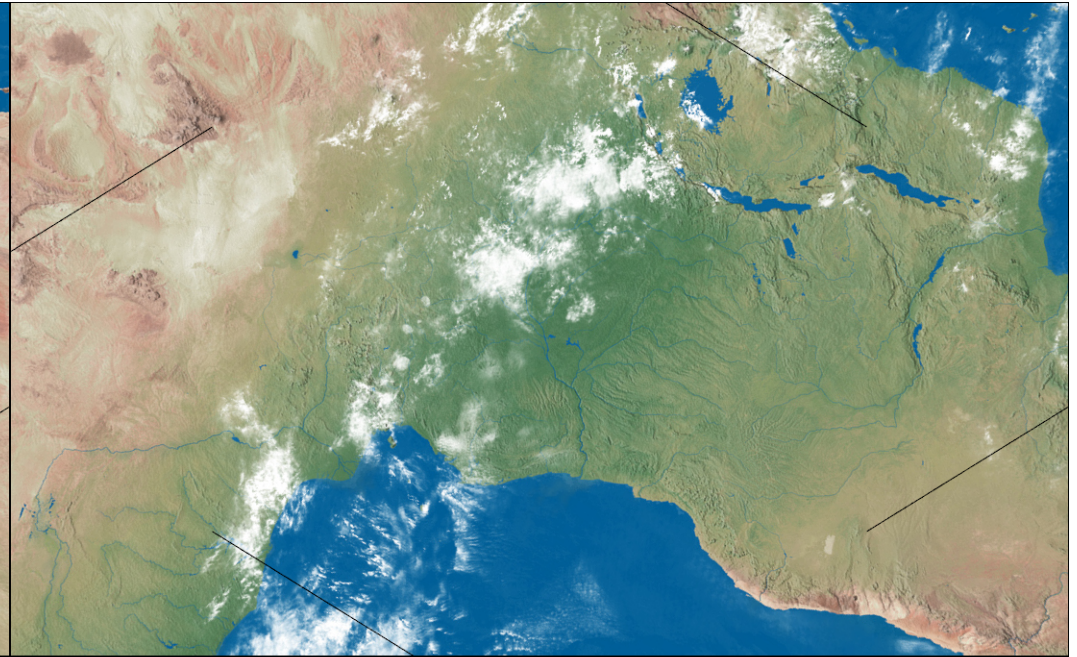
**Earth 2d**



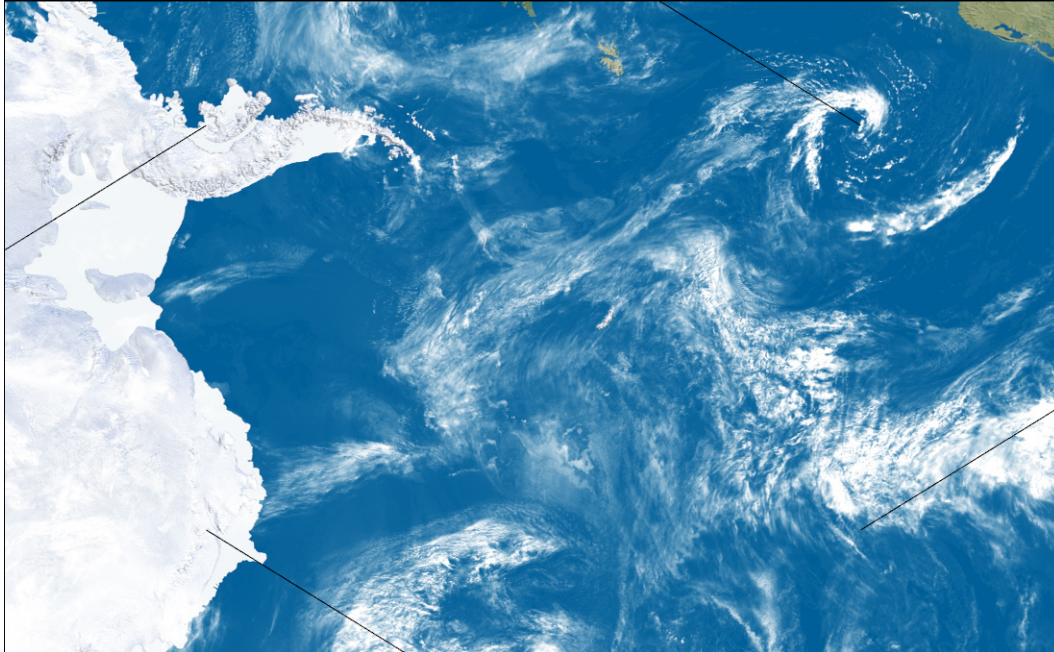
**Earth 3a**



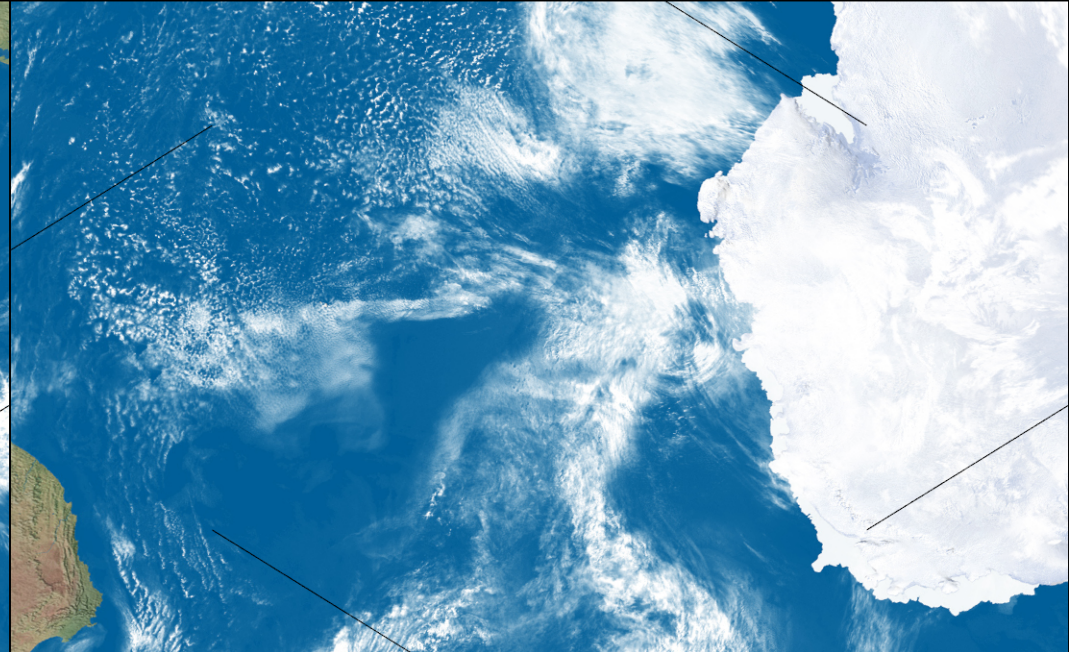
**Earth 3b**



**Earth 3c**

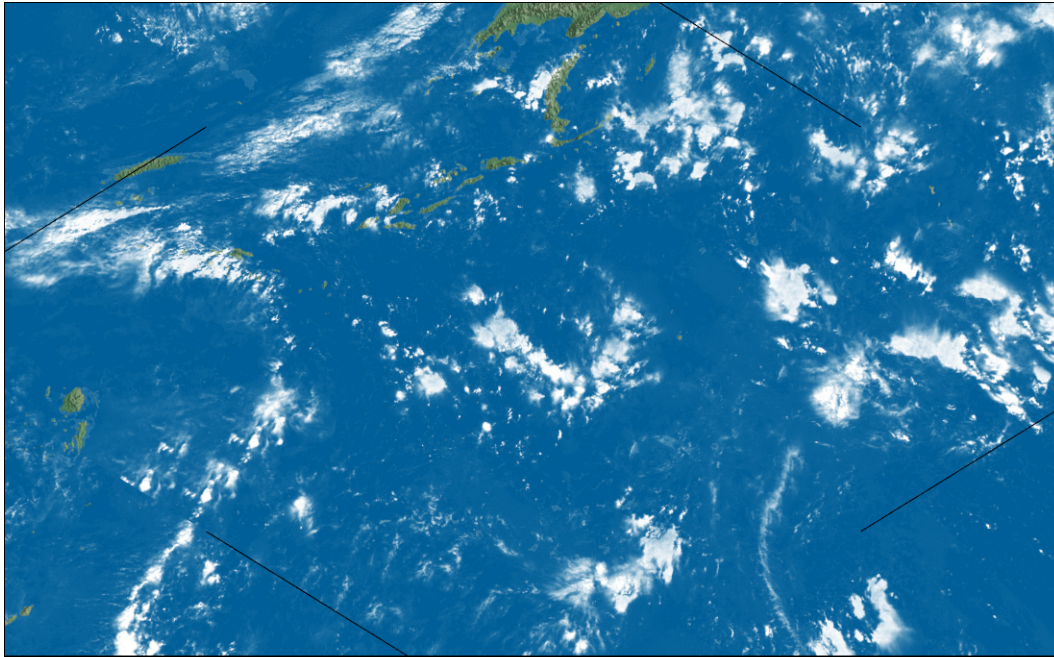


**Earth 3d**

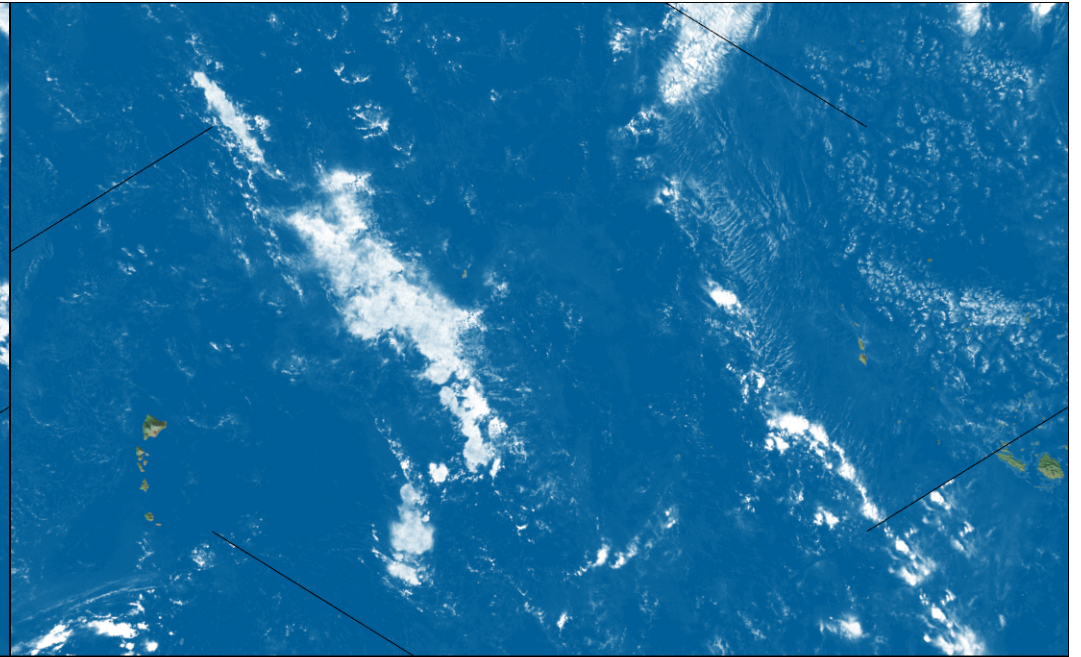




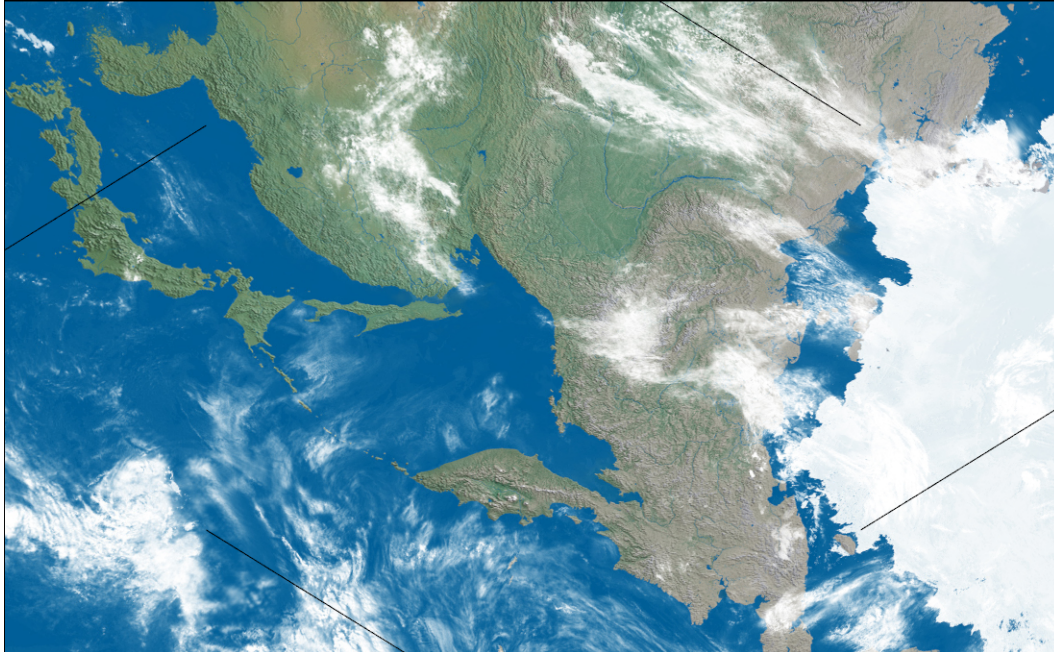
**Earth 4a**



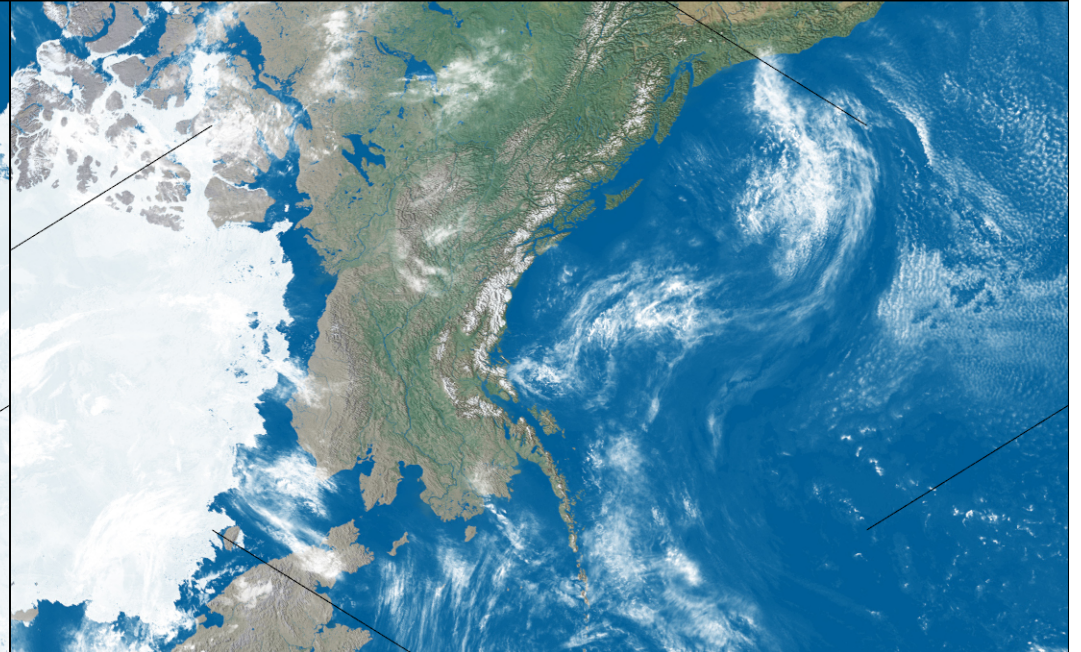
**Earth 4b**



**Earth 4c**



**Earth 4d**

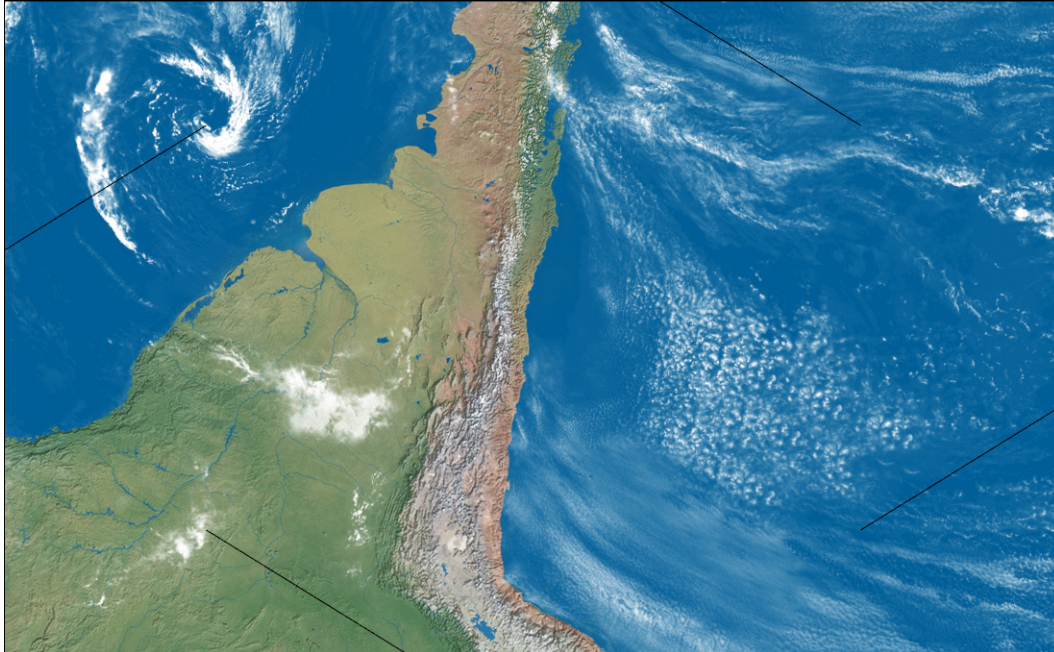
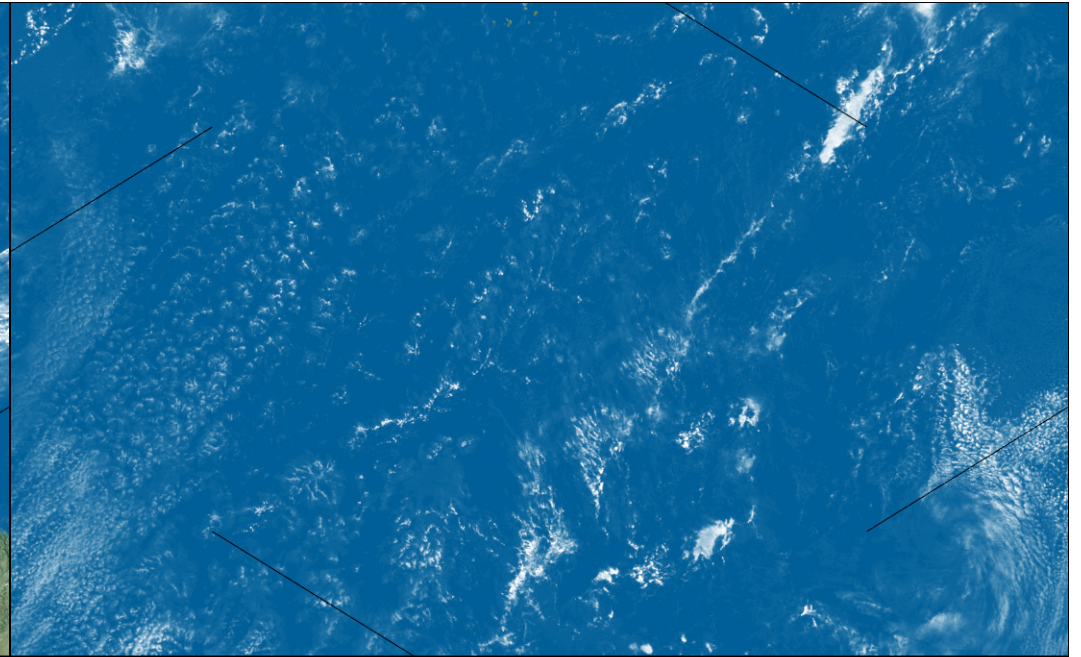




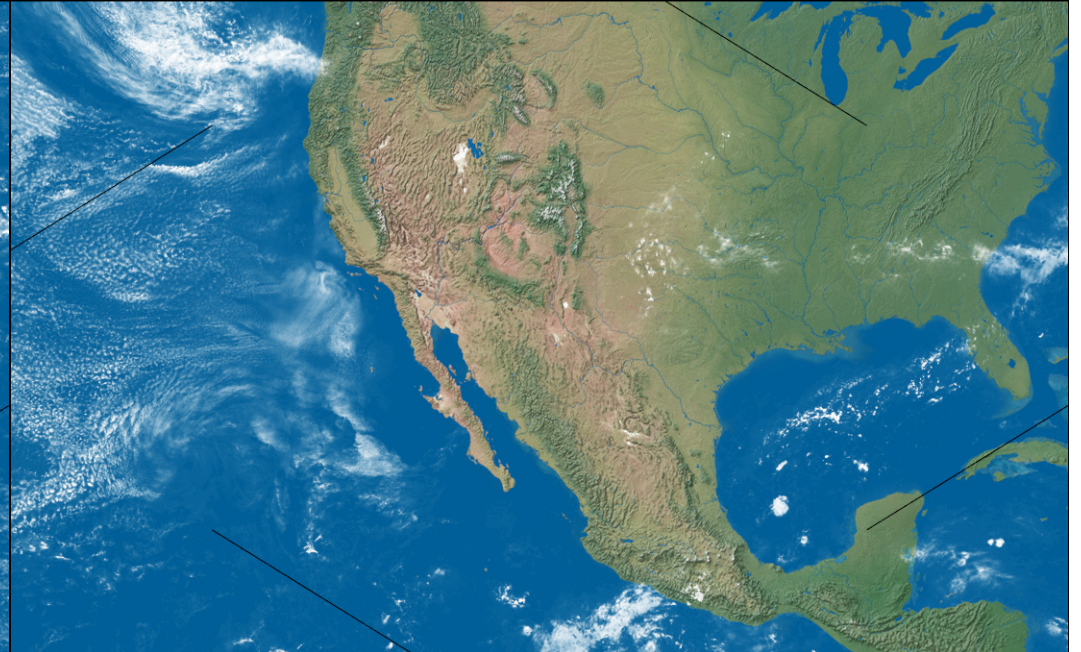
**Earth 5a**



**Earth 5b**



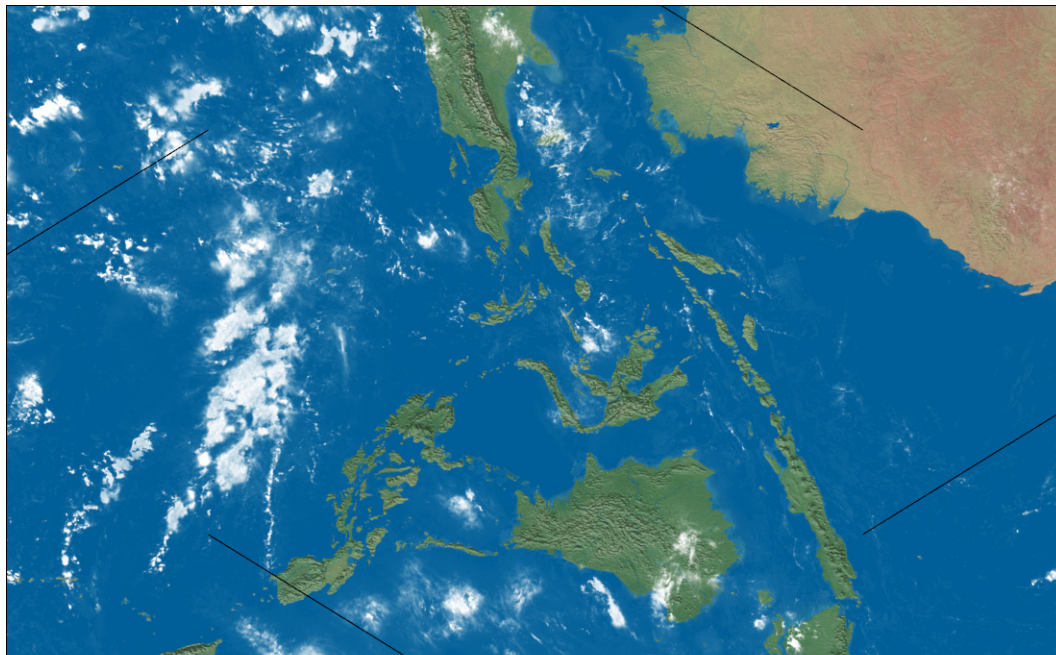
**Earth 5c**



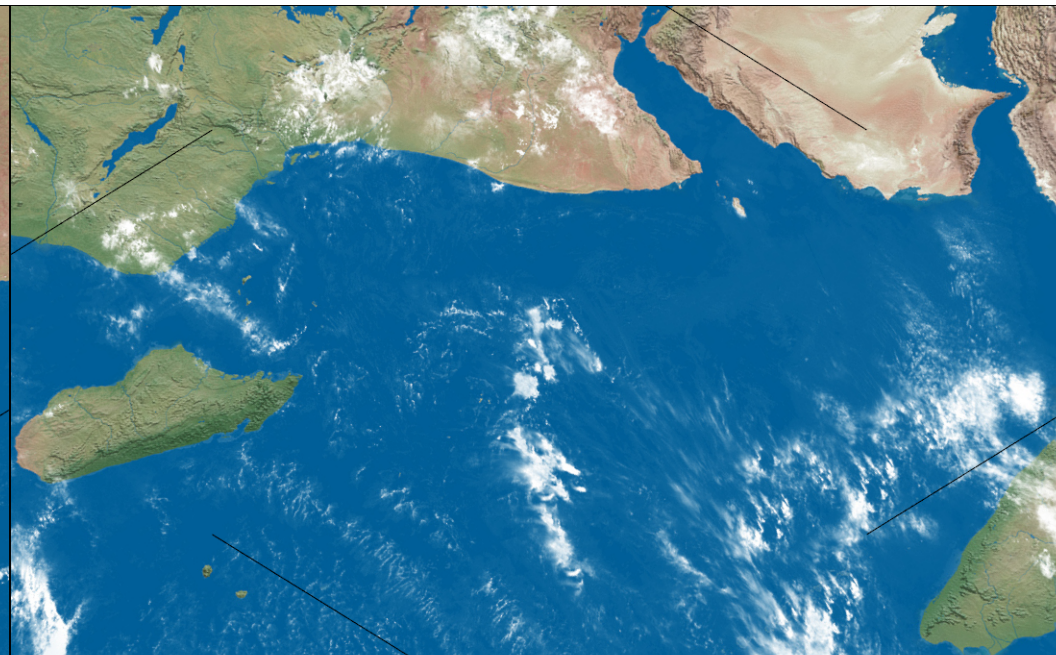
**Earth 5d**



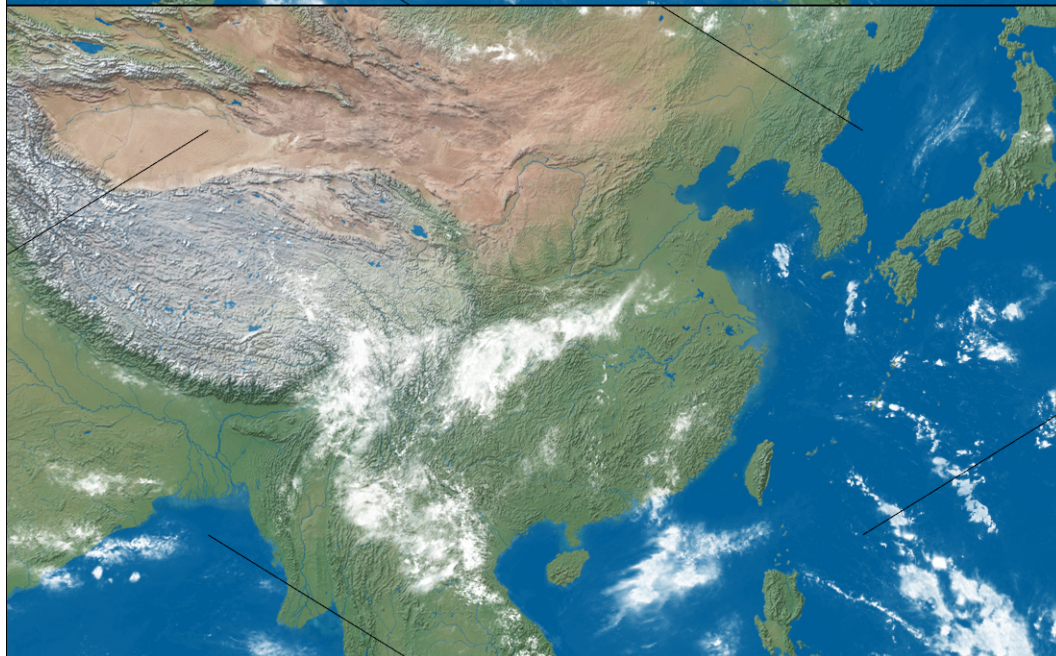
**Earth 6a**



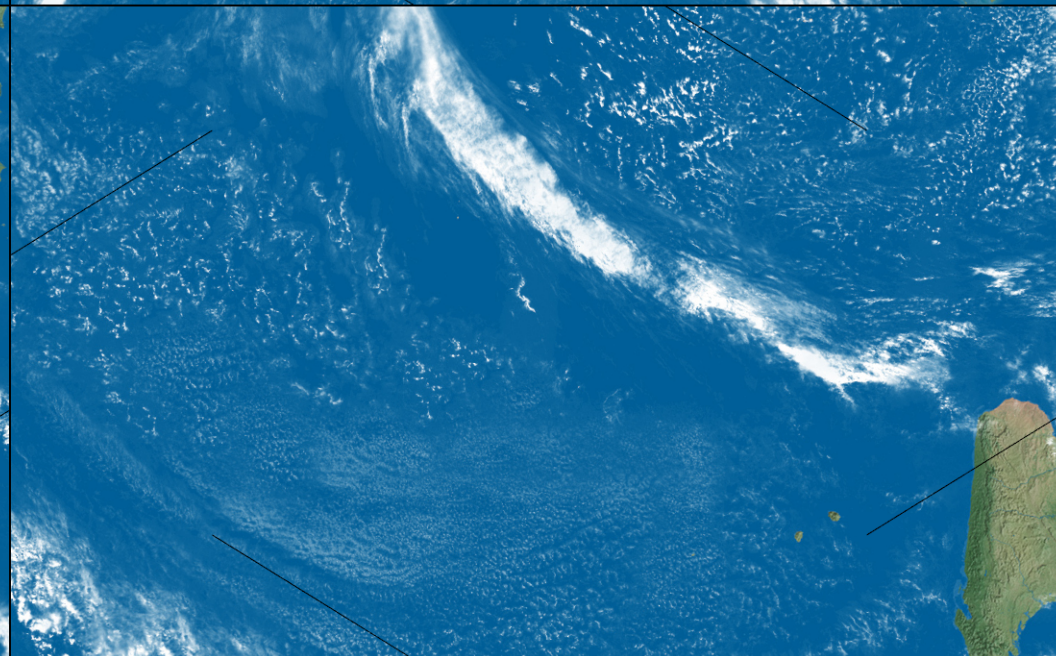
**Earth 6b**



**Earth 6c**



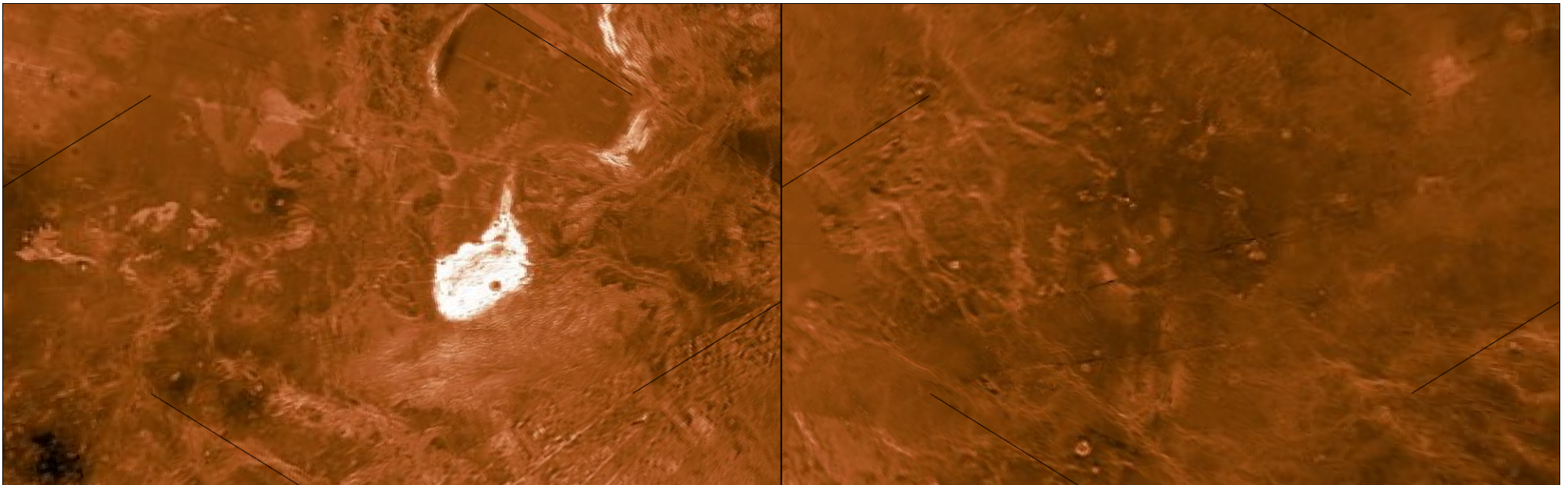
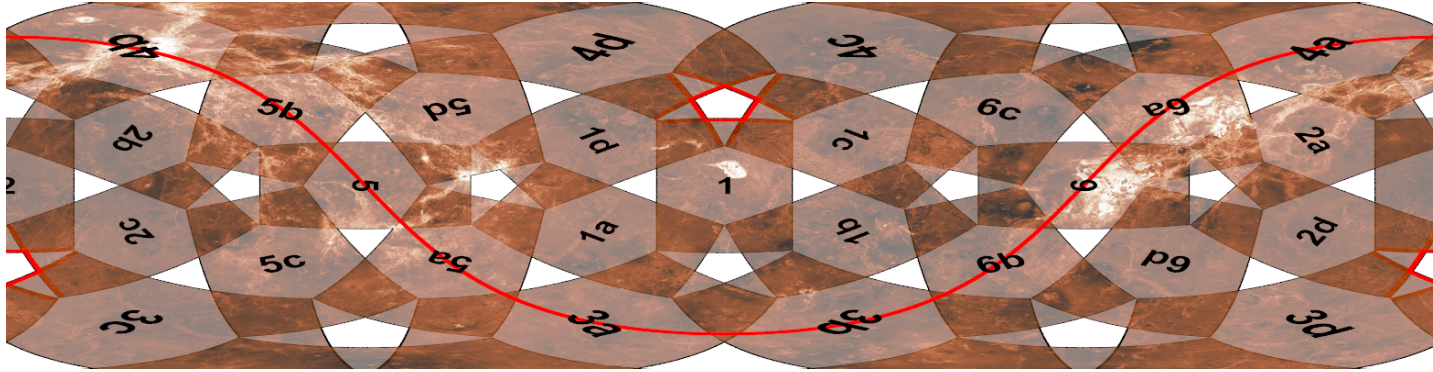
**Earth 6d**





## Venus

Cut out the rectangles, cut in the lines and mount the cards as shown here.  
The red line is the equator, the red pentagons are the poles.

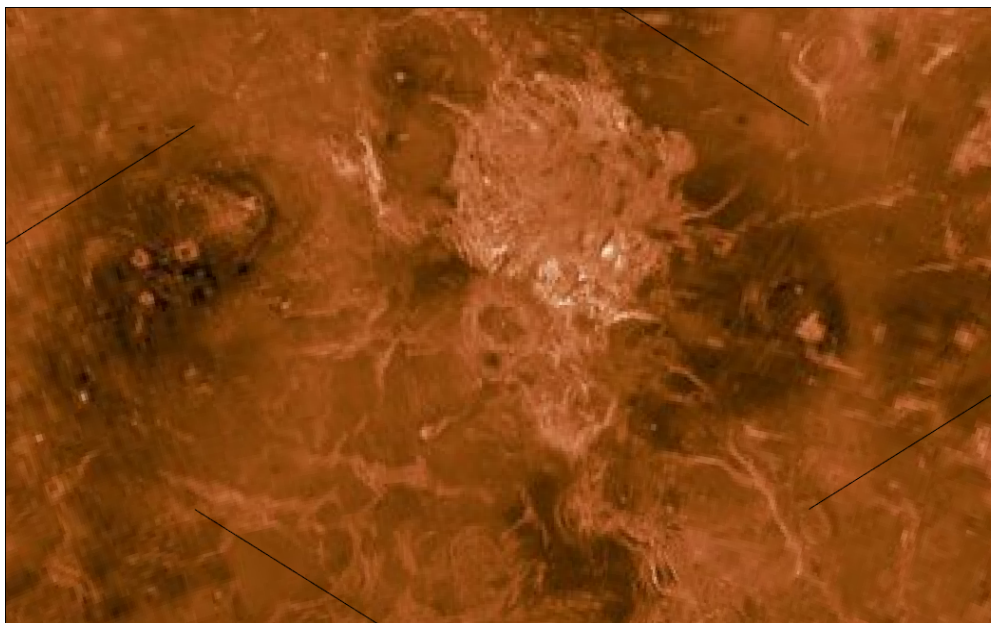


Venus 1

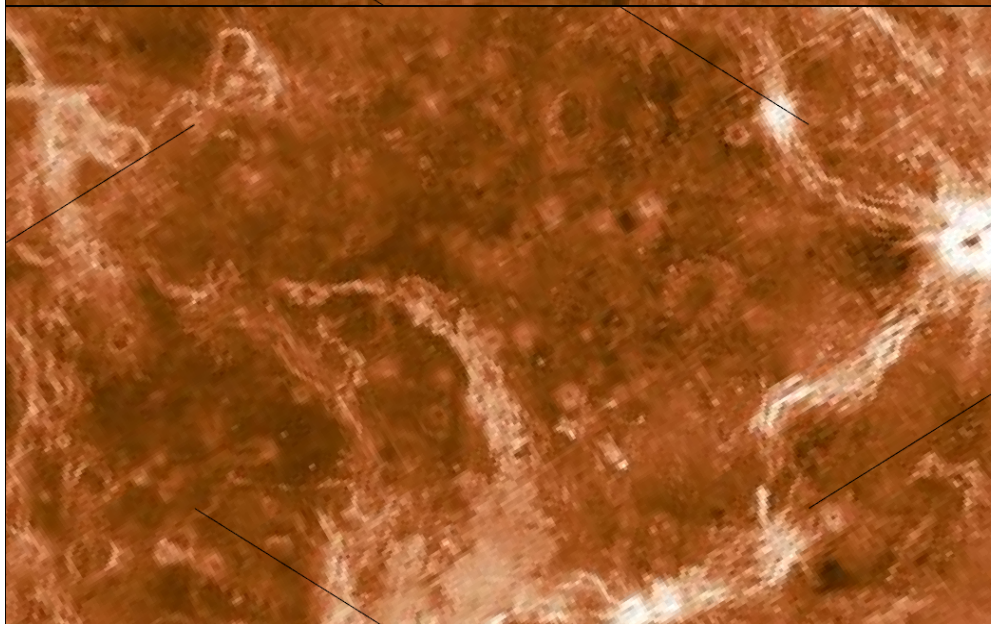
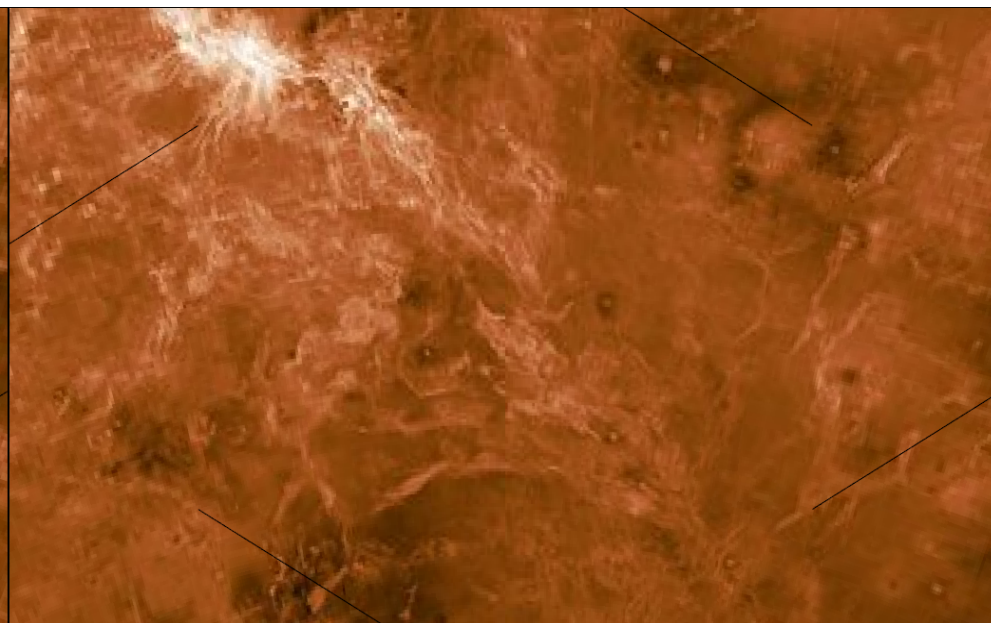
Venus 2



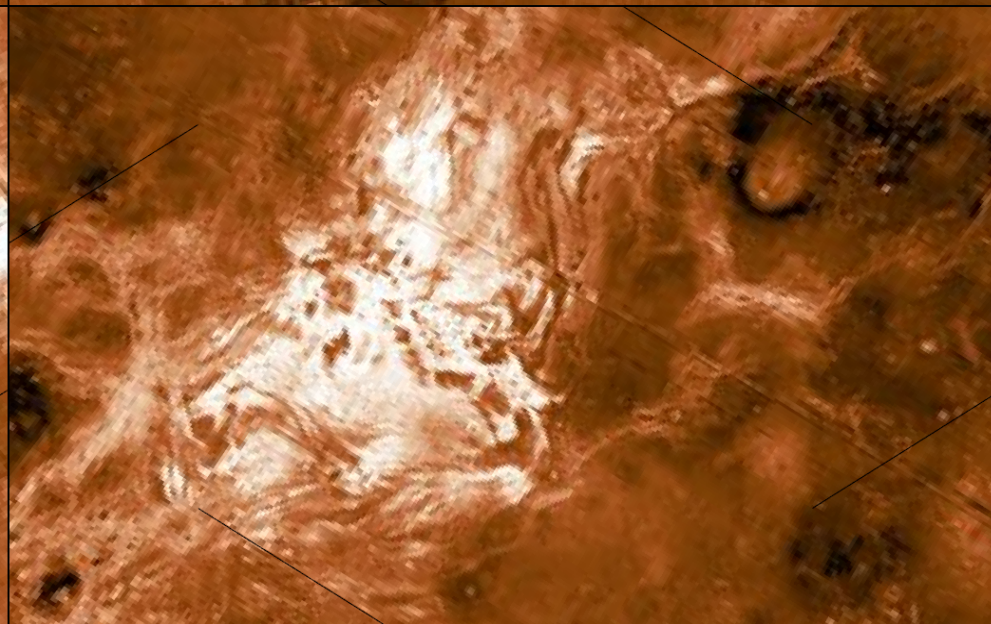
**Venus 3**



**Venus 4**



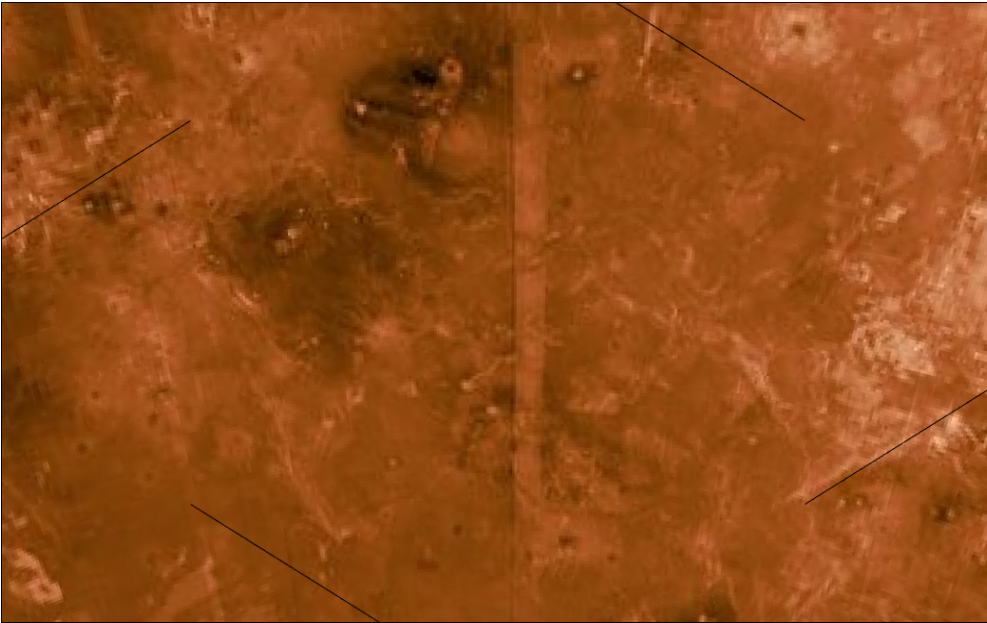
**Venus 5**



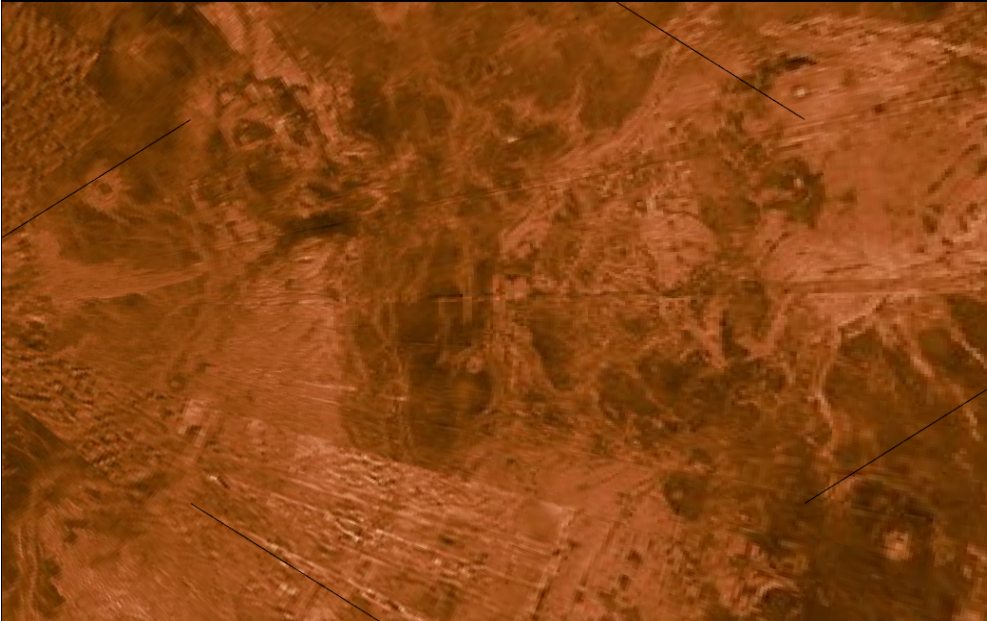
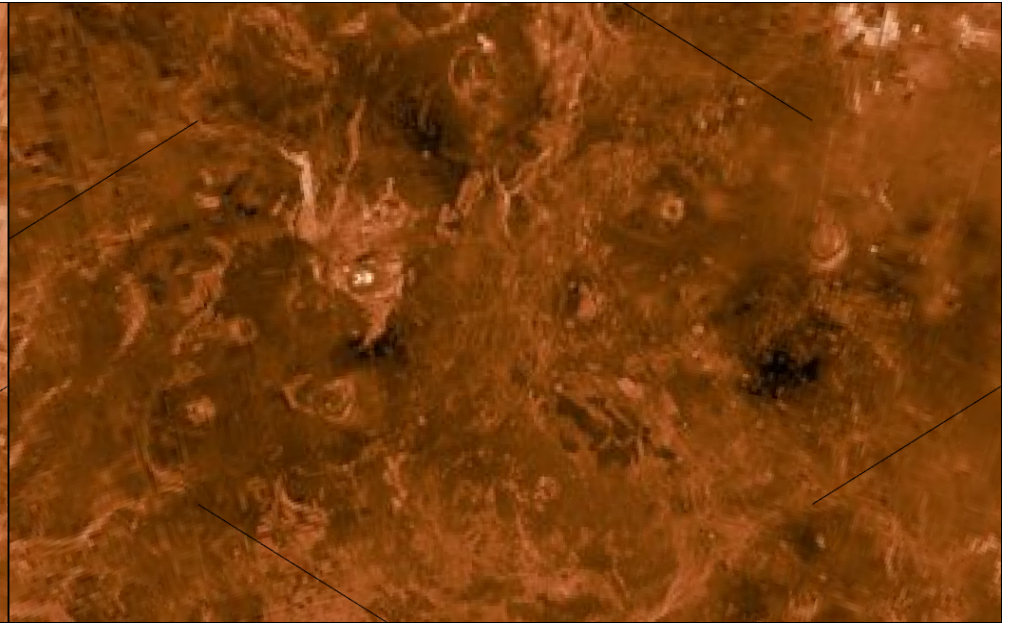
**Venus 6**



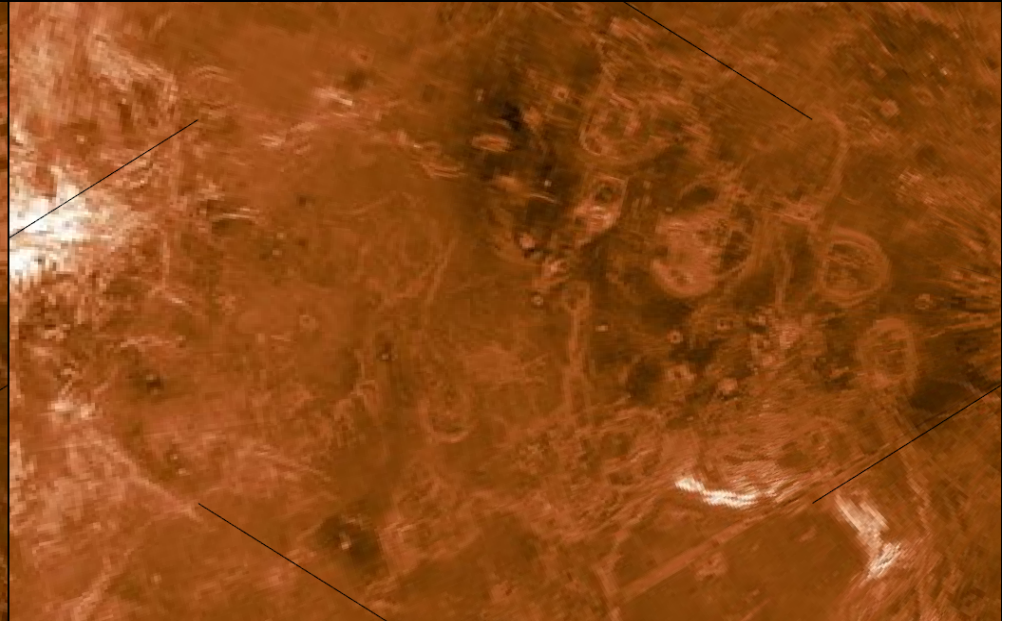
**Venus 1a**



**Venus 1b**



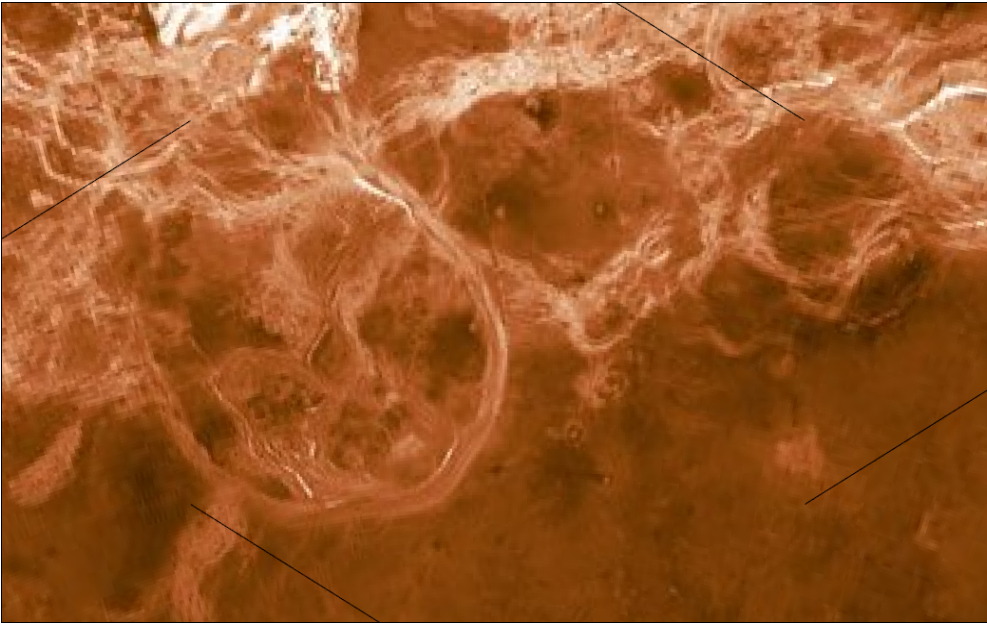
**Venus 1c**



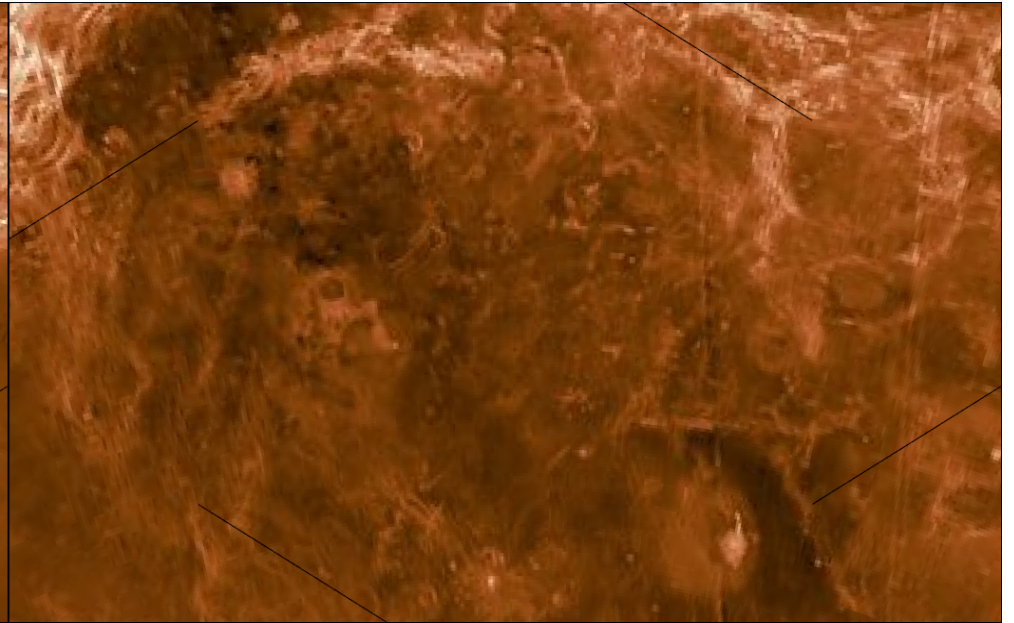
**Venus 1d**



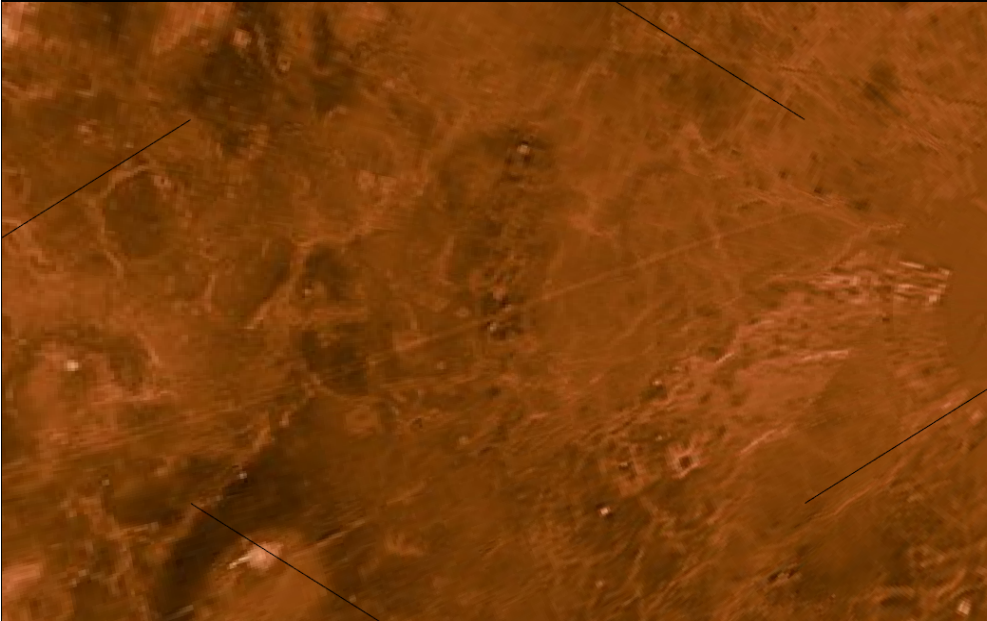
**Venus 2a**



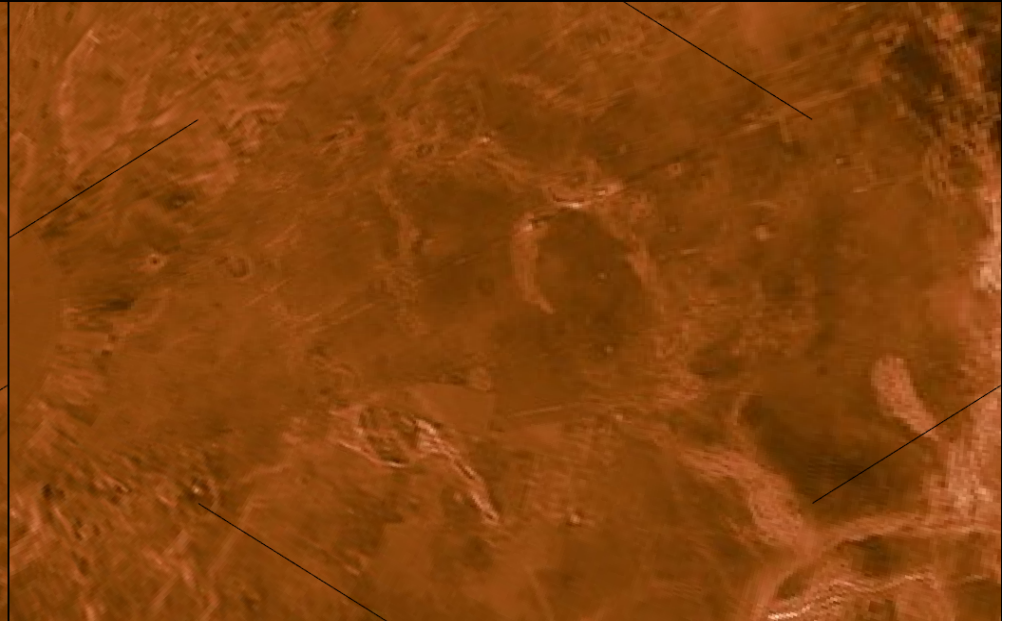
**Venus 2b**



**Venus 2c**



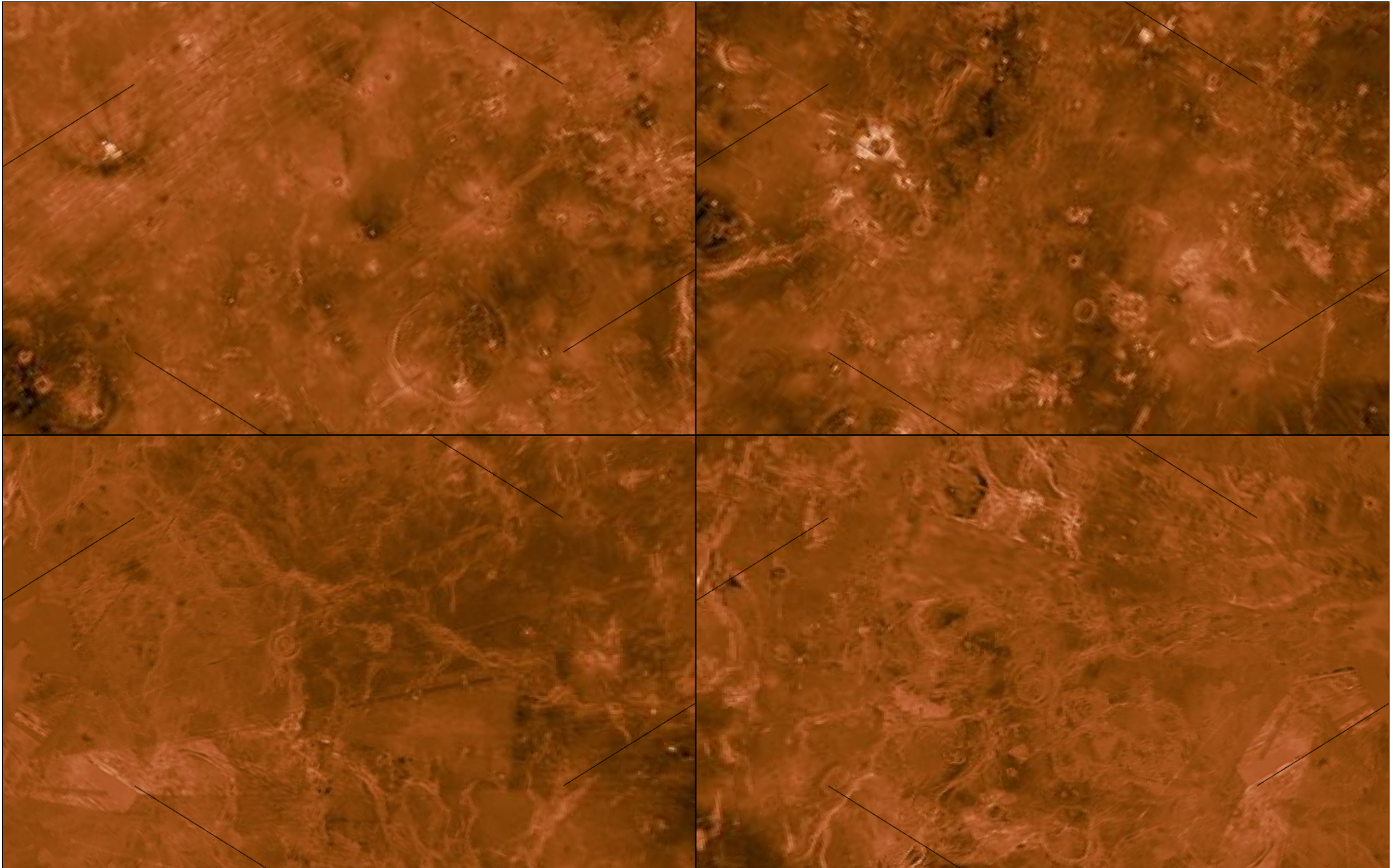
**Venus 2d**





**Venus 3a**

**Venus 3b**

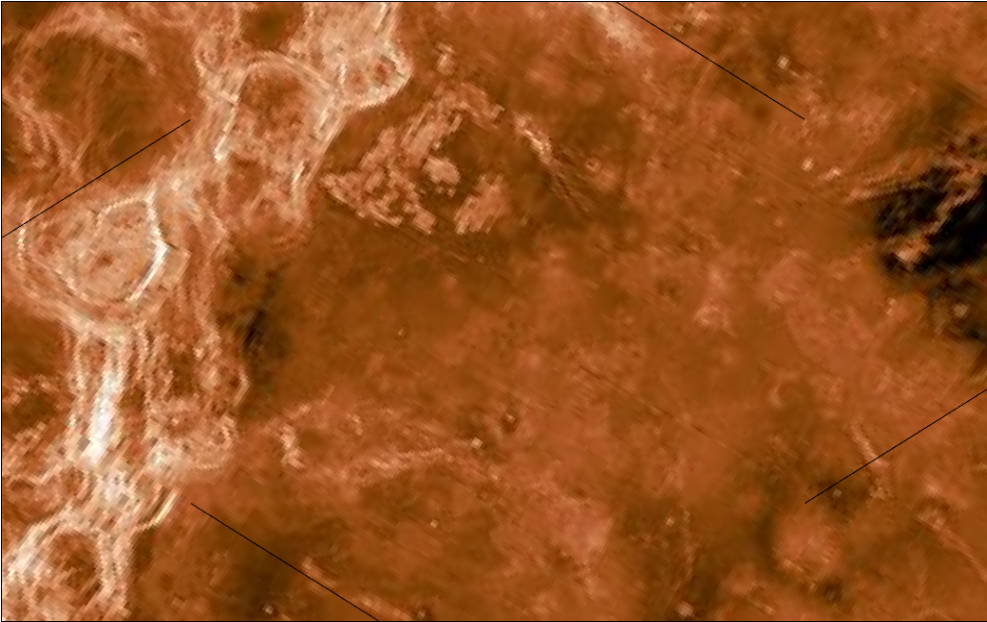


**Venus 3c**

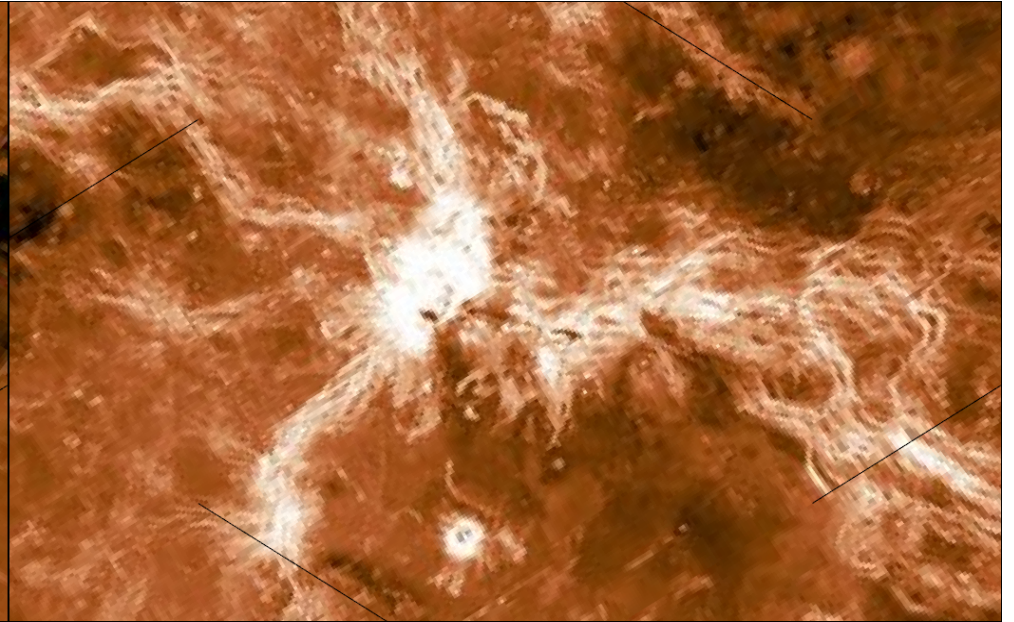
**Venus 3d**



**Venus 4a**



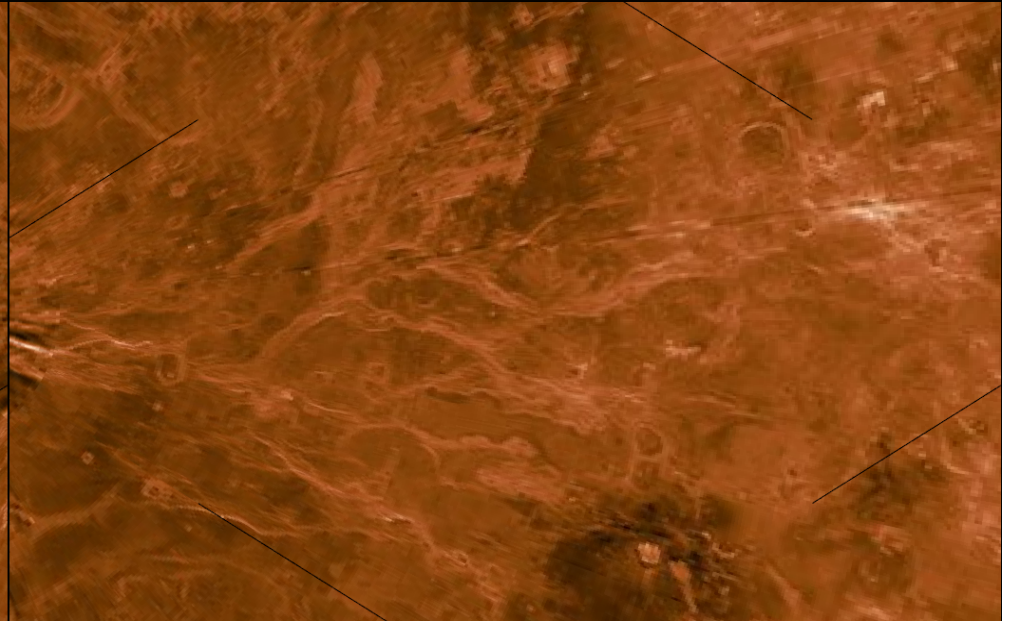
**Venus 4b**



**Venus 4c**

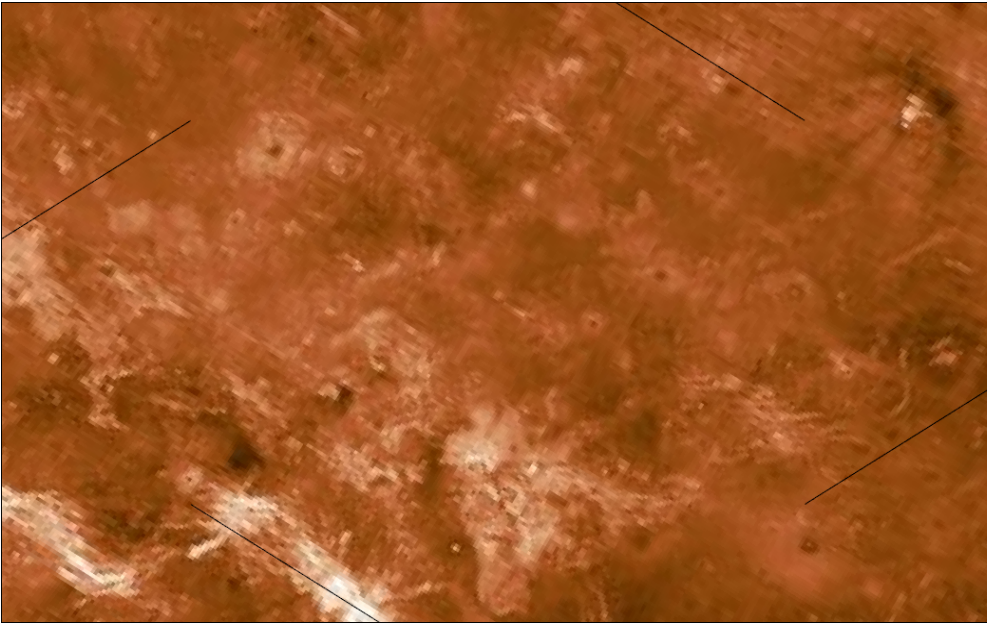


**Venus 4d**

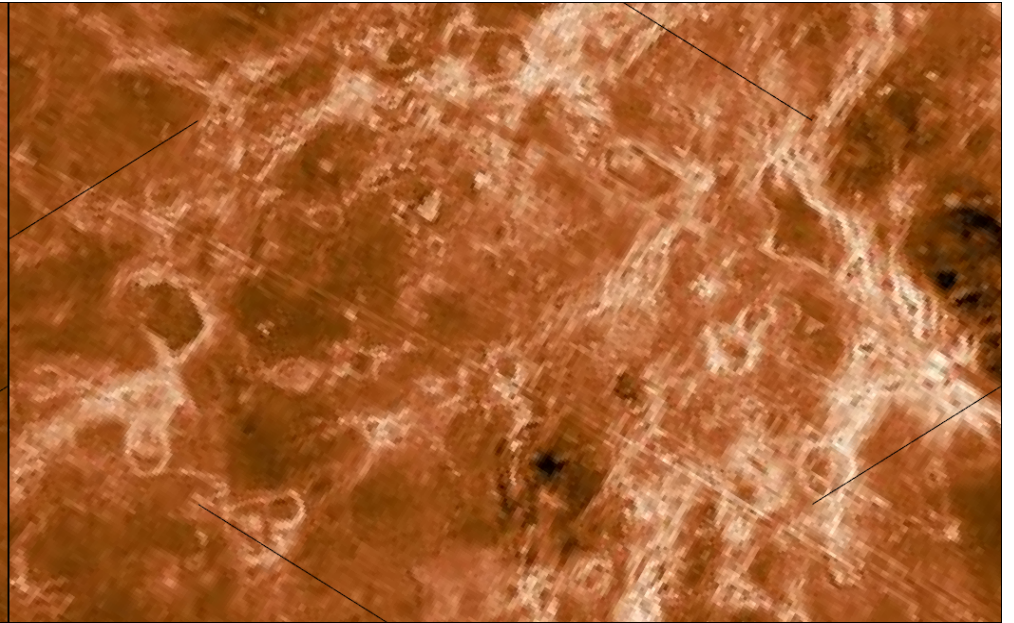




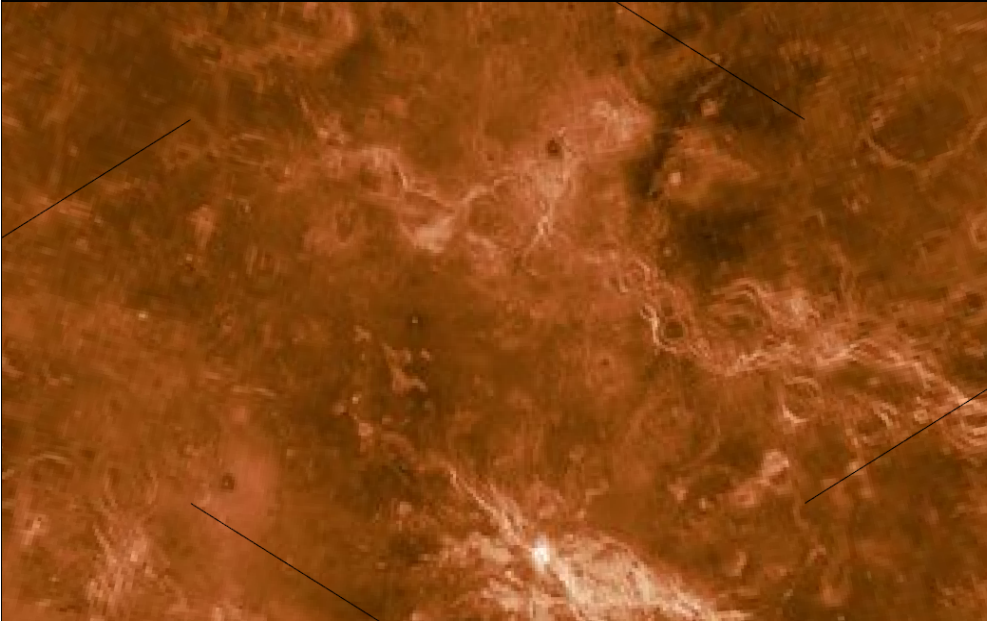
**Venus 5a**



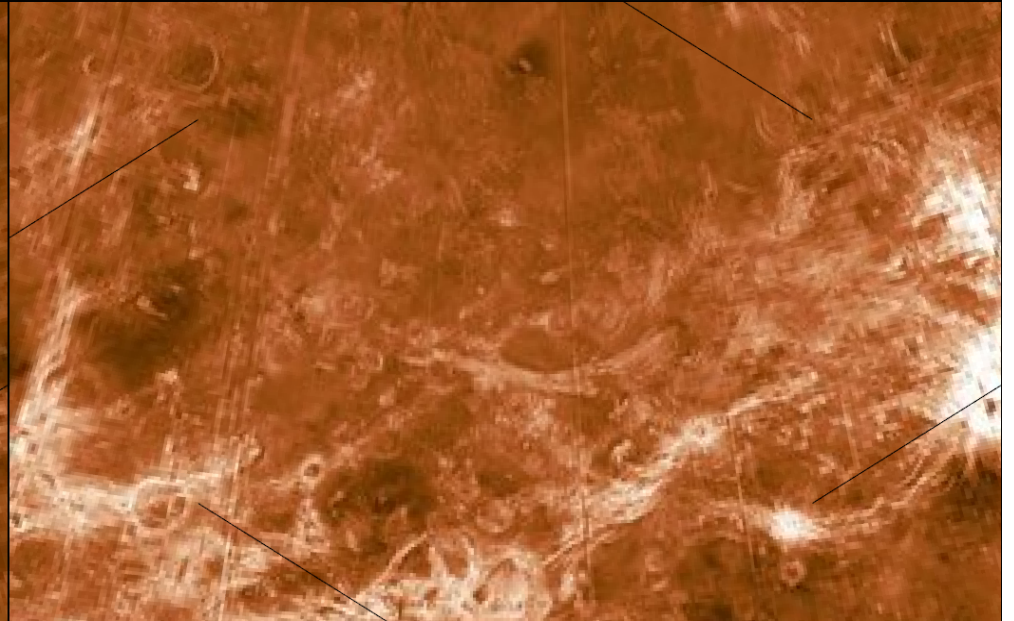
**Venus 5b**



**Venus 5c**

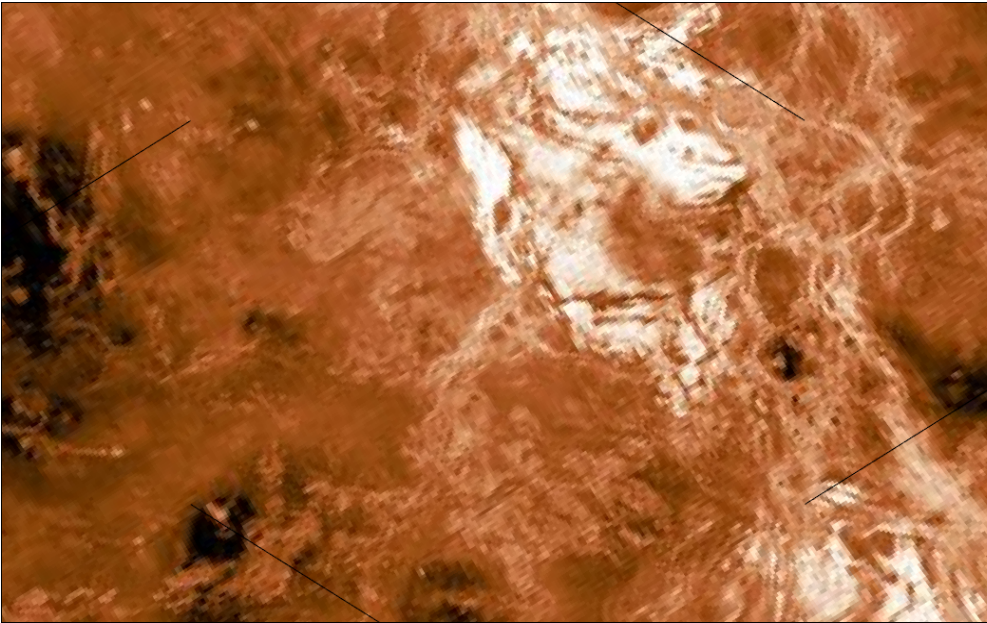


**Venus 5d**

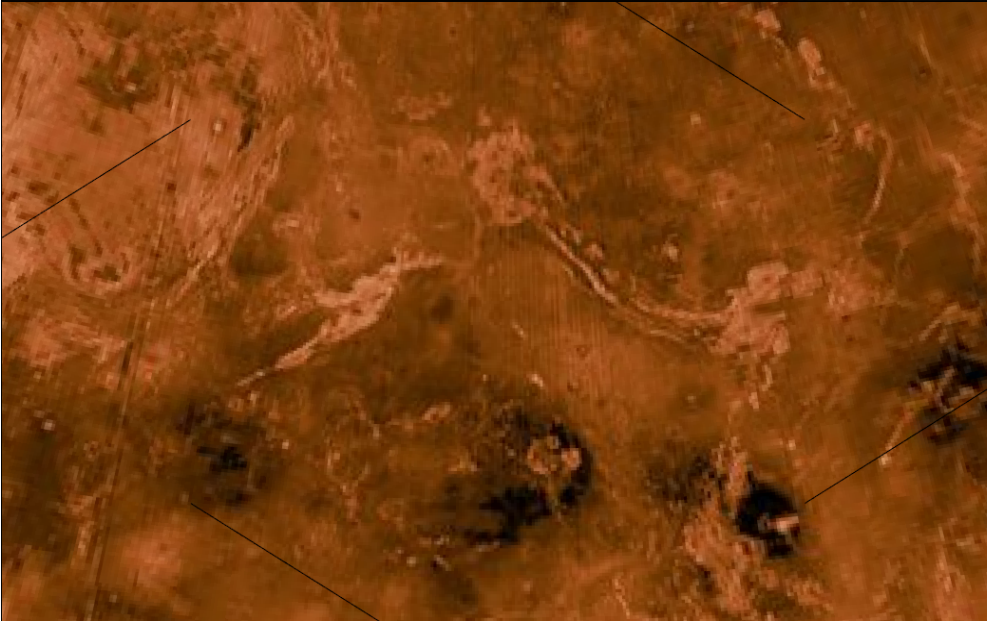
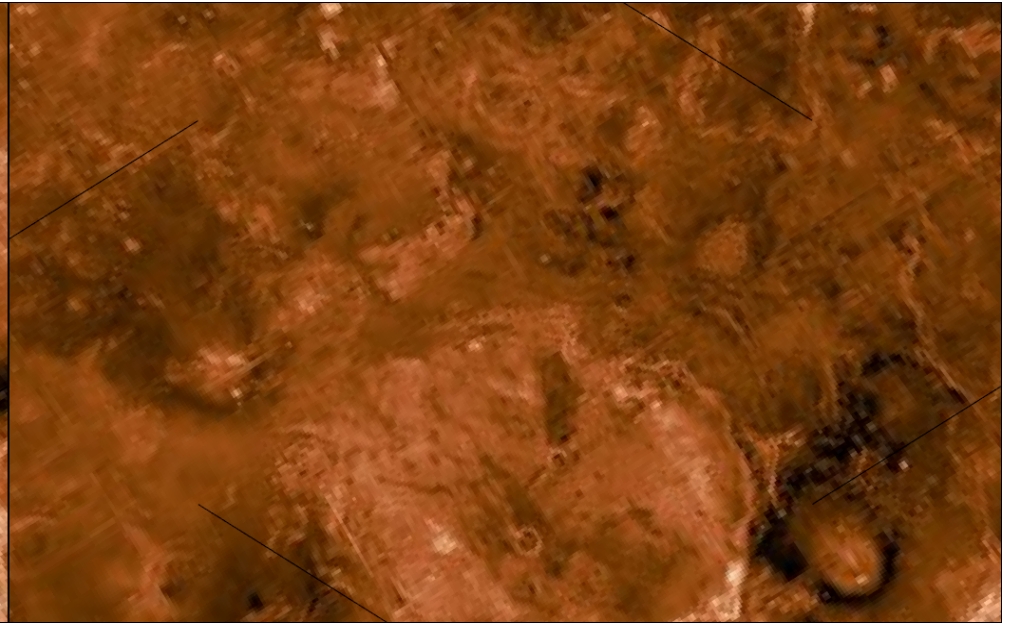




**Venus 6a**



**Venus 6b**



**Venus 6c**

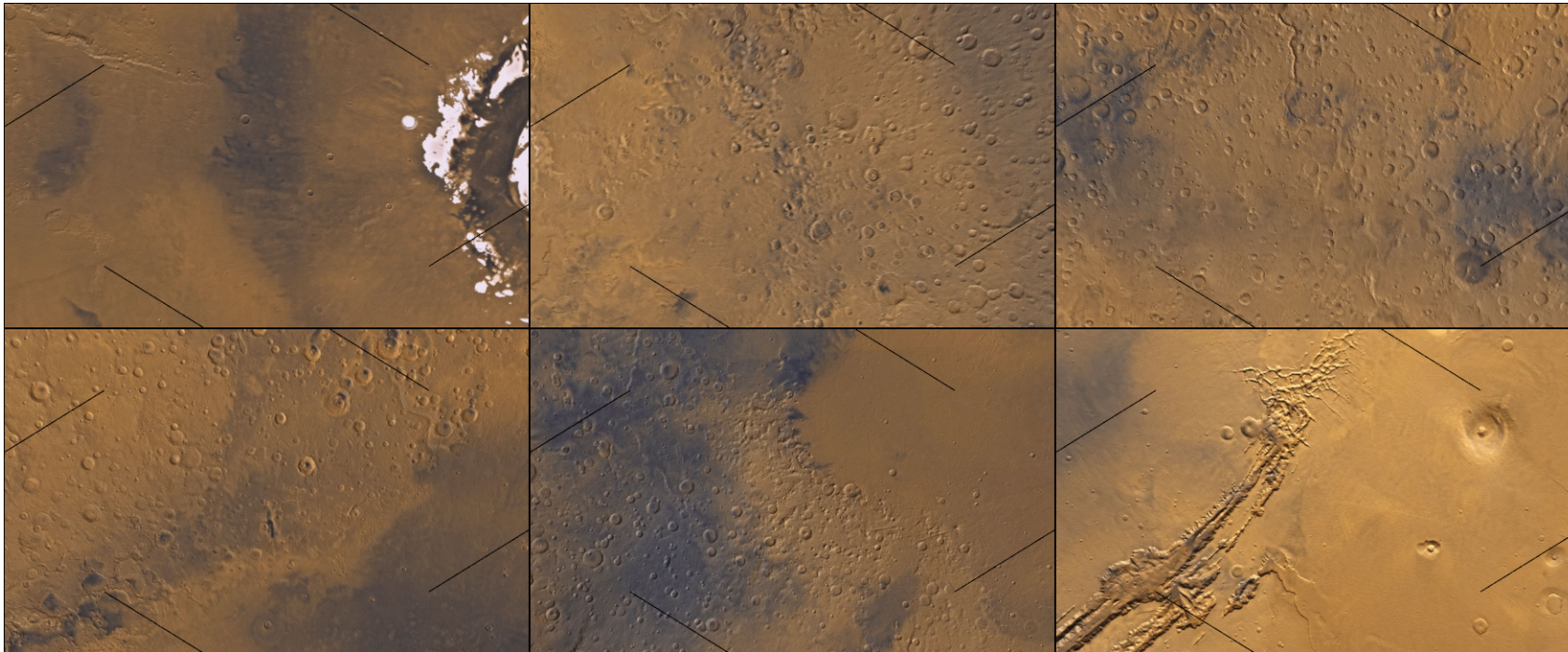
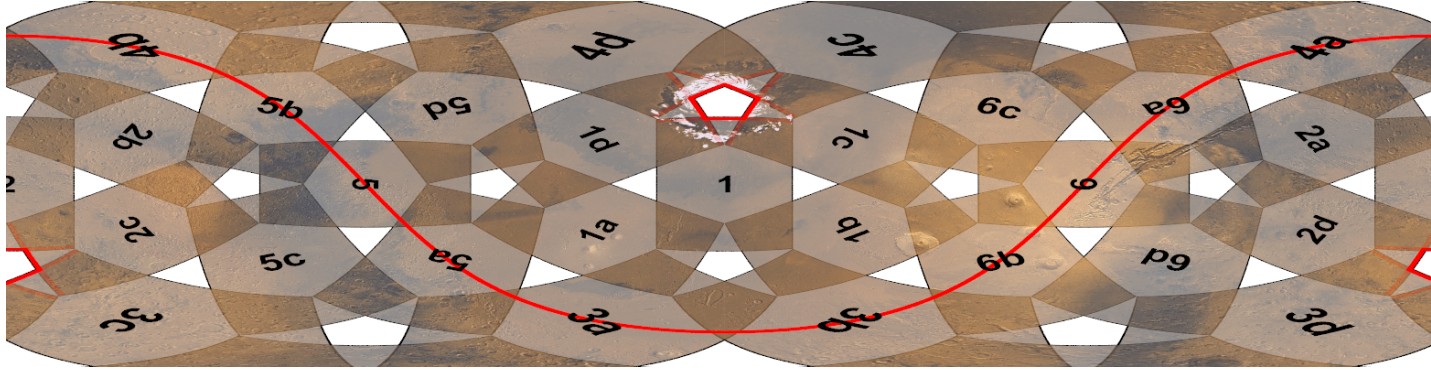


**Venus 6d**



## Mars

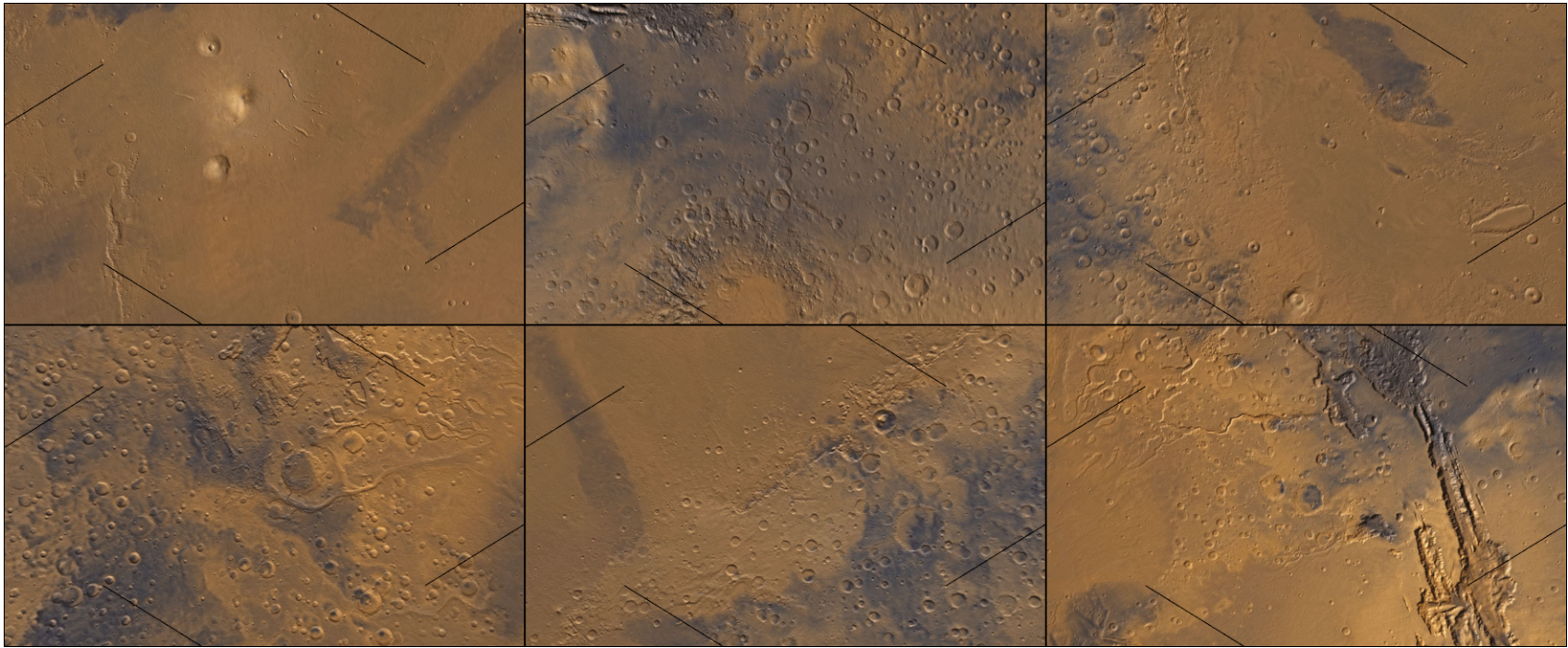
Cut out the rectangles, cut in the lines and mount the cards as shown here.  
The red line is the equator, the red pentagons are the poles.



Numbered pieces

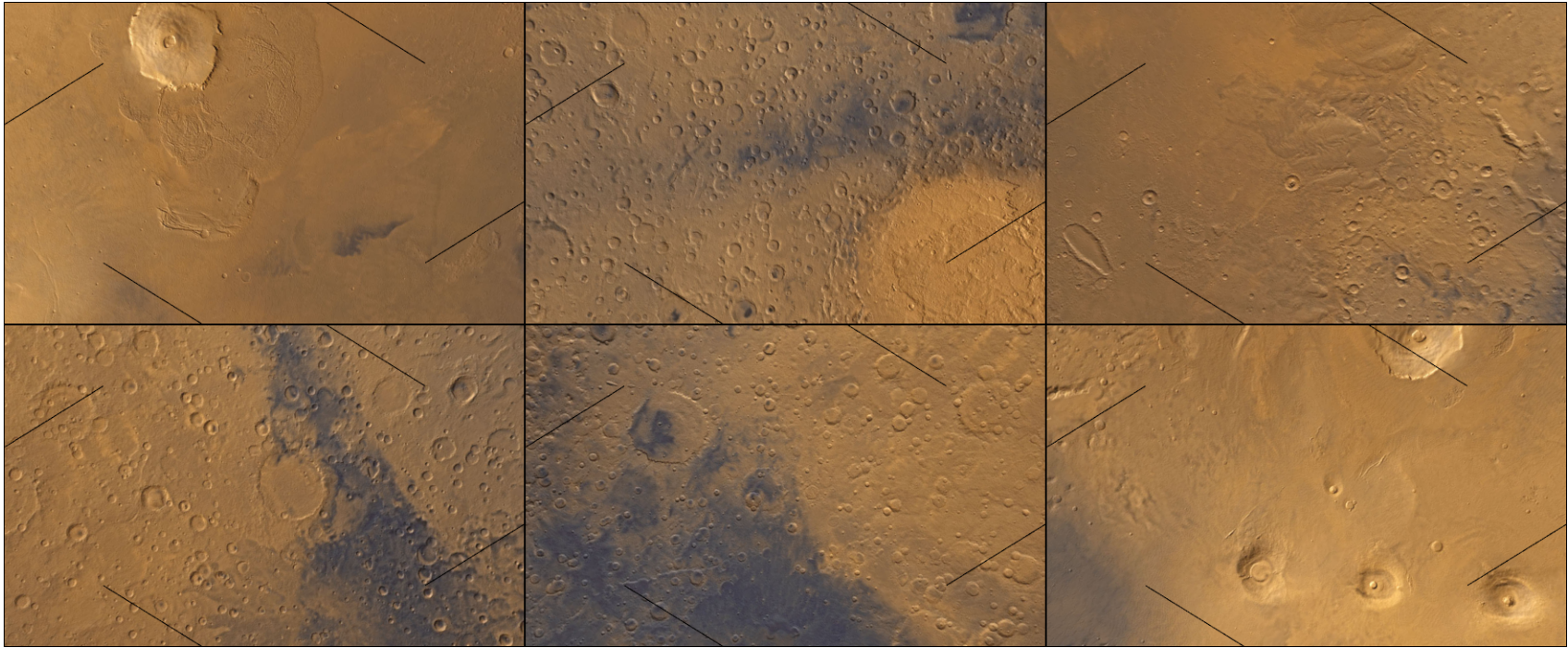
1	2	3
4	5	6





**Mars pieces a**

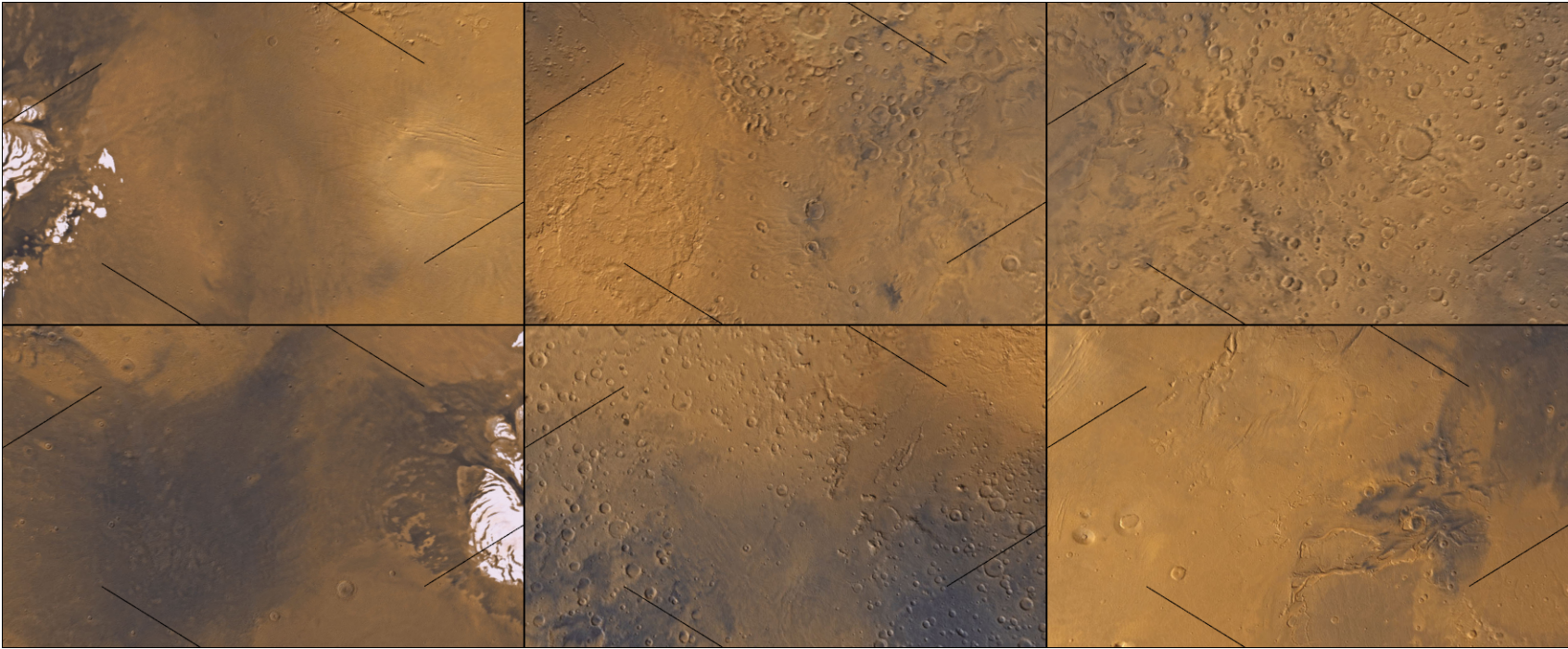
1	2	3
4	5	6



**Mars pieces b**

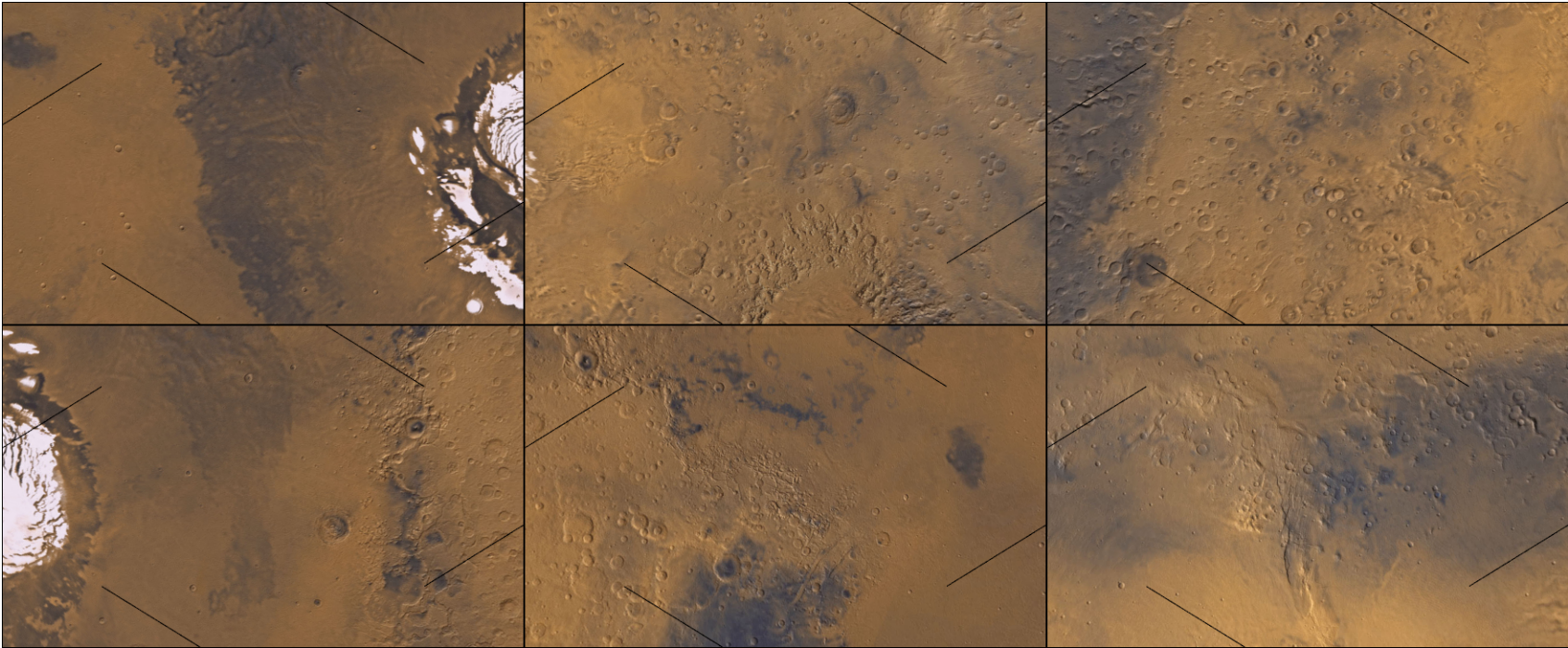
1	2	3
4	5	6





**Mars pieces c**

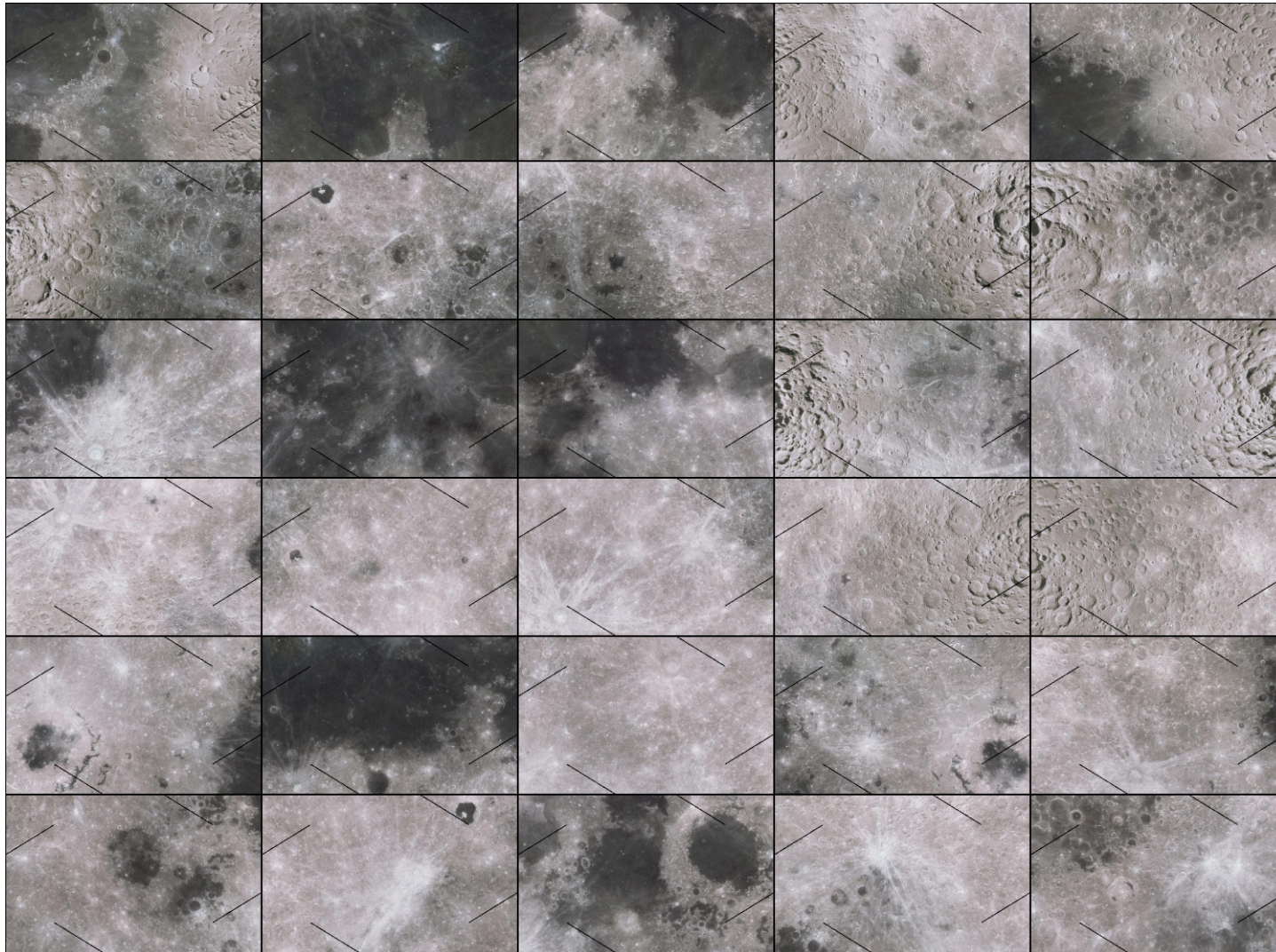
1	2	3
4	5	6



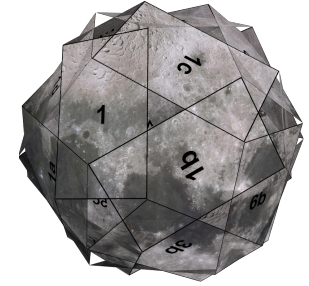
**Mars pieces d**

1	2	3
4	5	6

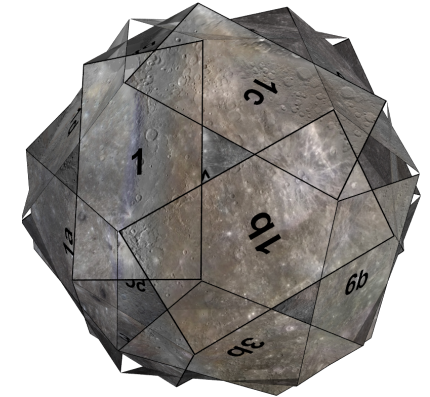




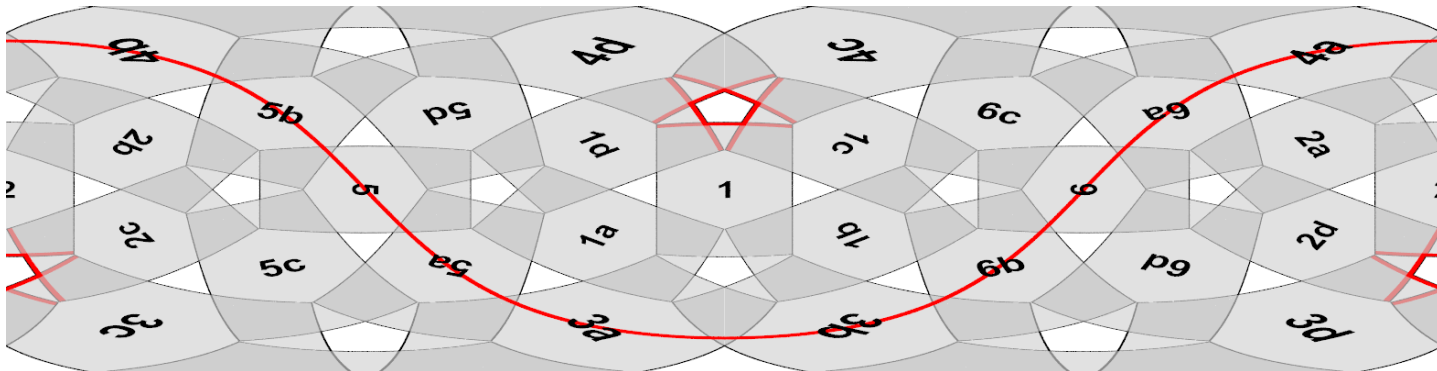
**Moon (this page)**



**Mercury (next page)**



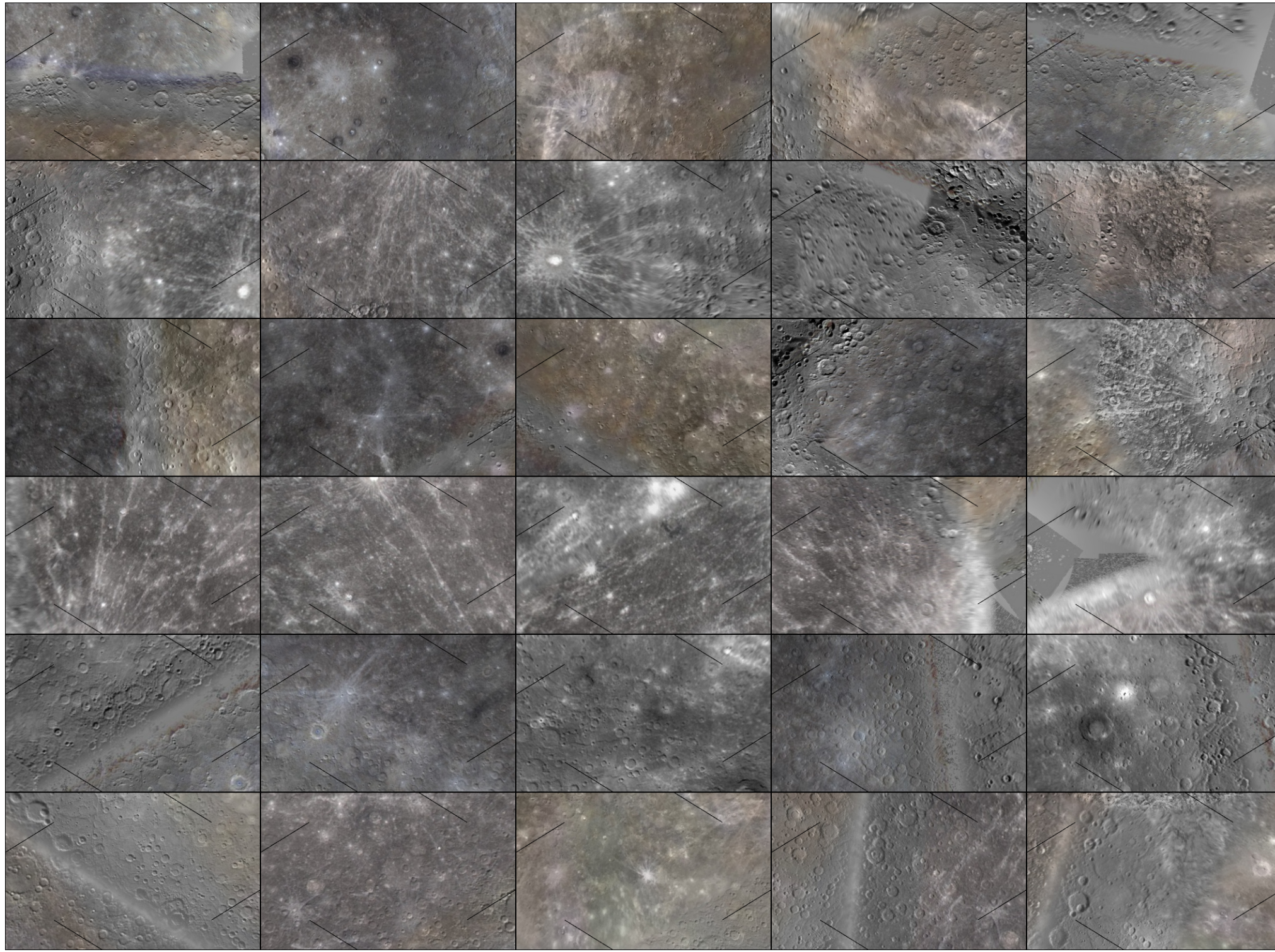
Cut out the rectangles, cut in the lines and mount the cards as shown here. The red line is the equator, the red pentagons are the poles.



Pieces are ordered as:

1	1a	1b	1c	1d
2	2a	2b	2c	2d
3	3a	3b	3c	3d
4	4a	4b	4c	4d
5	5a	5b	5c	5d
6	6a	6b	6c	6d





6d

1d

**Mercury** See moon page for instructions